



STEEL STRUCTURES FOR OVERHEAD LINES

Product Catalogue



OUR PROFILE

Everfresh Exportz is one of the leading Electrical and Hardware manufacturer and traders from India supplying complete range of Electrical, Hardware, Tools and cast iron products. Furthermore, we are also calibrated to engineer customized electrical product within stipulated time frame.

Our products are designed and manufactured to meet and exceed various international standards. Our quality standards and manufacturing capability ensures customers best quality products at most competitive prices.

EF, enjoys a close relationship with major organizations for manufacturing best in class range of overhead line material. This collaboration provides our customer the most complete and advanced pre and post sales service.

1.0 **SCOPE**

This Specification provides the range of steelwork required for the construction of standard designs of 33kV, 11kV and L.V. overhead lines on steel pole supports. It includes cross-arm configurations, supporting steelwork for ancillary equipment and brackets for anti-climbing devices and for supporting and terminating L.V. overhead lines and services.

The Specification lists fittings in alphabetical order but the Drawings are attached in numerical order for easy reference.

2.0 **REFERENCES**

This Specification makes reference to the following documents :-

BS 4	Structural Steel Sections Part 1 - Hot Rolled Sections
BS EN 1562:1997	Blackheart Malleable Iron Castings
BS 729	Hot Dip Galvanised Coatings on Iron and Steel Articles.
BS 1387	Steel Tubes and Tubulars suitable for Screwing to BS 21 Pipe Threads.
BS EN 20273:1992	Clearance Holes for Metric Bolts and Screws.
BS EN 10137:1996	Weldable Structural Steels
BS EN 10056-1:1999	Hot Rolled Structural Steel Sections Equal and Un-equal Angles
BS 5135	Metal Arc Welding of Carbon and Carbon Manganese Steels

3.0 **MATERIALS AND FINISH**

Unless otherwise specified the steel used in the manufacture of items to this Specification shall be to BS EN 10137, Grade 43A.

Equal and un-equal angle sections shall conform to BS EN 10056. Channel sections shall conform to BS 4, Part 1.

Tube used in the manufacture of items shall conform to BS 1387.

Castings shall be manufactured from Grade 3 iron in accordance with BS EN 1562.

Bending of flat strap shall be carried out cold. The purchaser reserves the right to request proof loading tests to be carried out on article after bending.

All ferrous material shall be hot dip galvanised in accordance with BS 729 after fabrication.

The purchaser reserves the right to inspect samples of steel articles prior to galvanizing.

4.0 WELDING

Welding shall be carried out in accordance with BS 5135. After welding and before galvanizing, welds shall be thoroughly cleaned to remove slag and spatter, particular attention being paid to the toes of welds and to the prevention of entrapment of slag and spatter. The preferred method of cleaning welds before galvanizing is by sand blasting.

5.0 TOLERANCES

Dimensions are subject to the following tolerances unless otherwise stated :

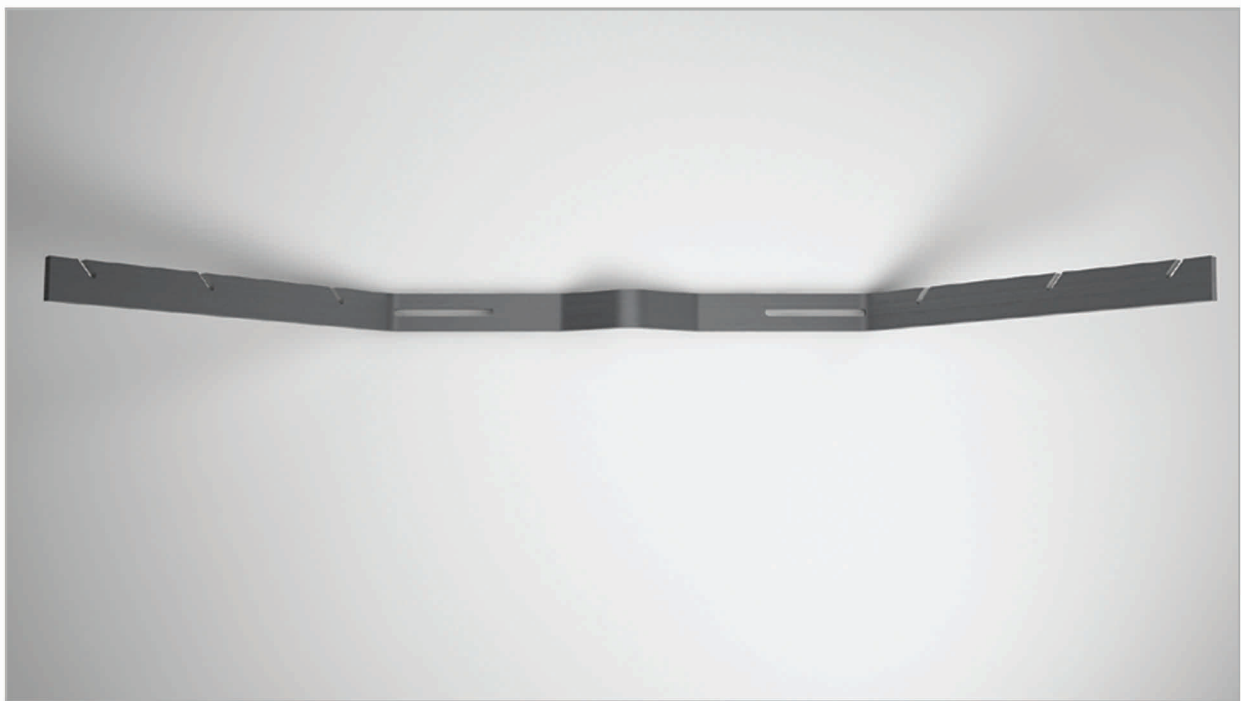
Dimensions up to and including 50 mm	- ± 1 mm
Dimensions greater than 50 mm	- ± 2 mm

Limiting dimensions of holes shall be within the tolerances of the 'medium fit series' of BS EN 20273, Table 2, the hole diameter shown in drawings correspond to the 'minimum diameter' column of the 'medium fit series'.

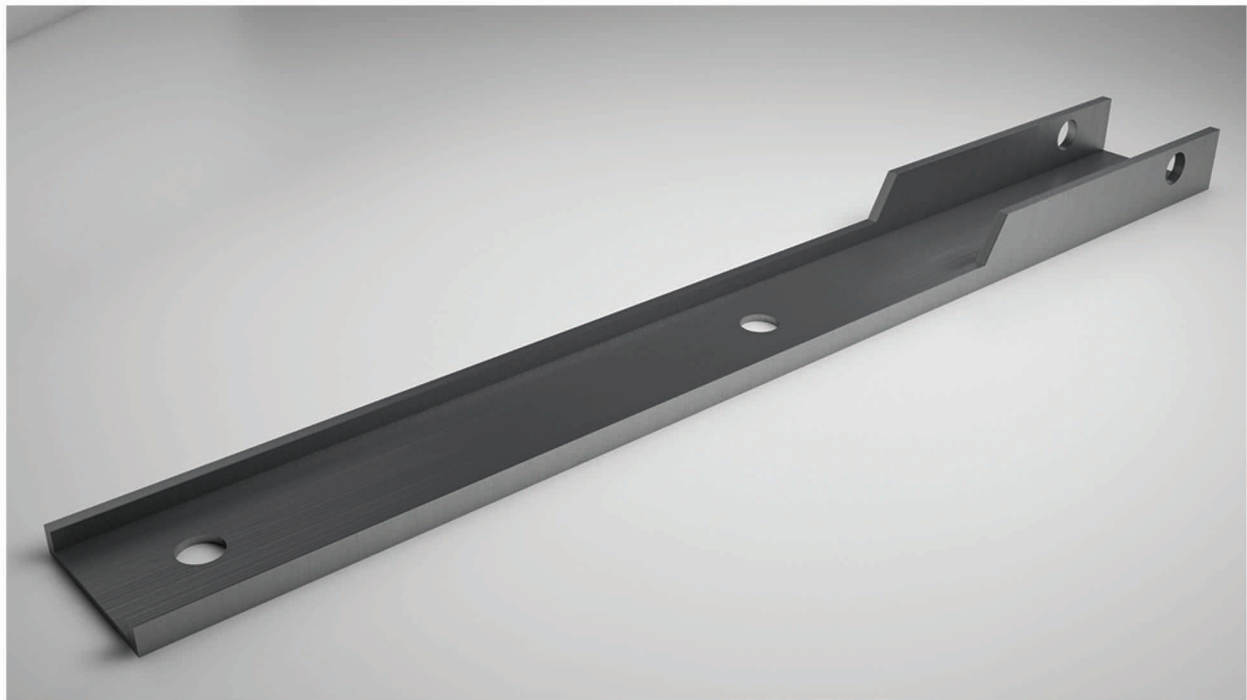
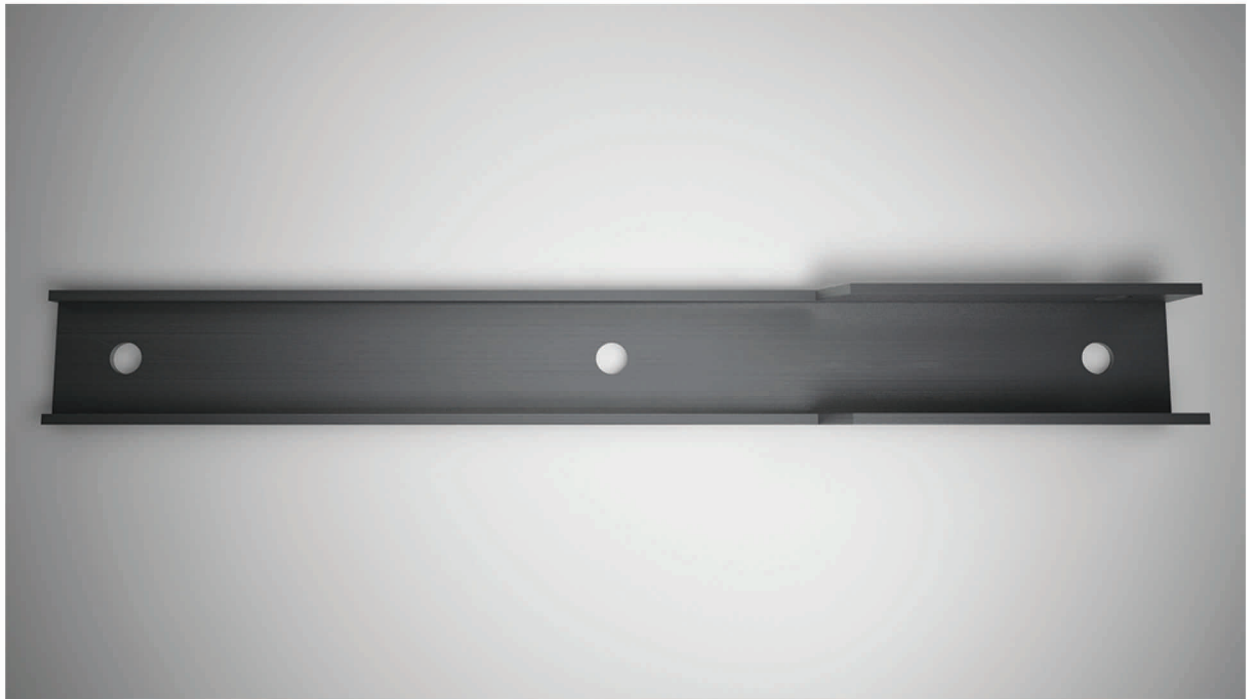
9.1 Alphabetical List of Fittings

Sl. No.	Category	Function	Page No.
1	Brace	33/11kV Crossarm	24
2	Bracket	Anti-Climbing Guard - Steel Poles	6
3	Bracket	Earthwire Bracket for P.O. Crossings	7
4	Bracket	L.V. House Service (Corner)	8
5	Bracket	L.V. House Service (Concentric)	9
6	Bracket	L.V. Insulator (D Iron & Pin)	10
7	Bracket	33/11kV Insulator	11
8	Bracket	Supporting Bracket	12
9	Bracket	Surge Diverter	13
10	Clamp	Staywire Terminating	26
11	Clamp	Adapter	27
12	Clamp	Phase Disc., Pole Number and Name Label	28
13	Clamp	Danger Notice	29
14	Clamp	Cleat	30
15	Crossarm	33/11kV Intermediate & Pin Angle	14
16	Crossarm	33/11kV Section/Angle to 60° deviation	15
17	Crossarm	33/11kV Terminal	16
18	Platform	33kV DOE Fuses	17
19	Platform	11kV DOE Fuses	18
20	Platform	Transformer - H Pole	19
21	Platform	33kV Surge Diverters Support	31
22	Platform	33kV Cable Support	32
23	Strap	33/11kV Section	20
24	Strap	33/11kV Terminal	21
25	Strap	L.V. Extension	22
26	Strut	33/11kV Crossarm	23
27	Tie	Tie Rods	25

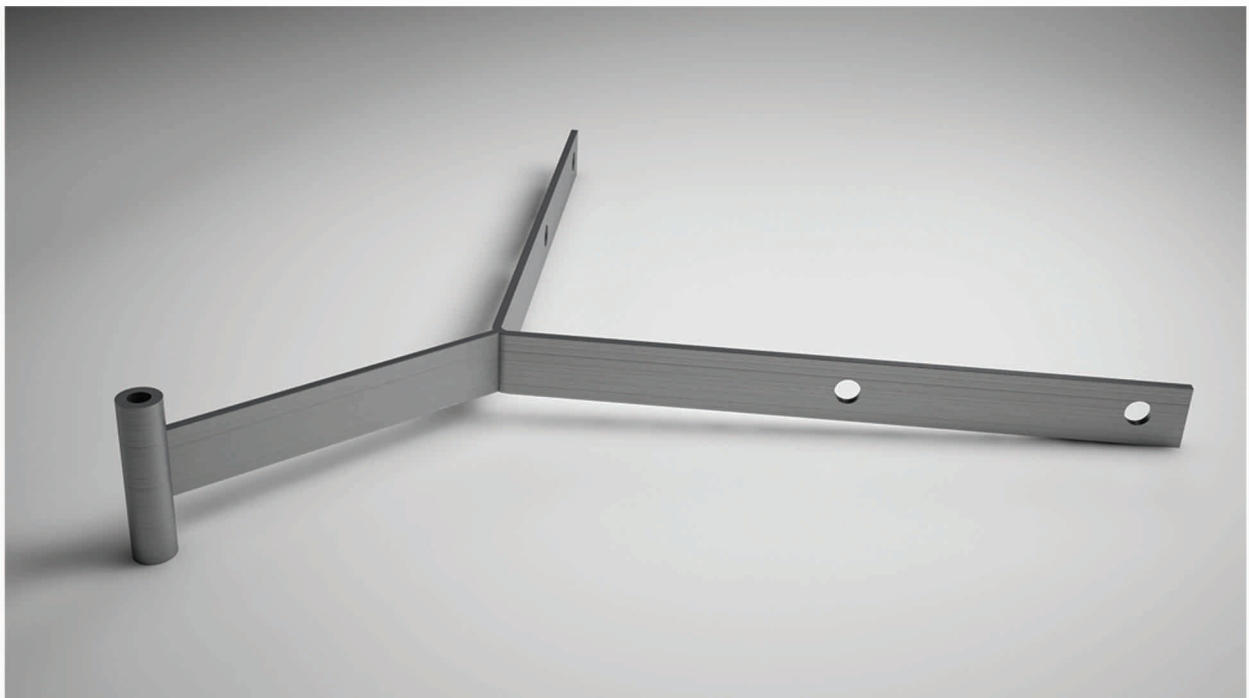
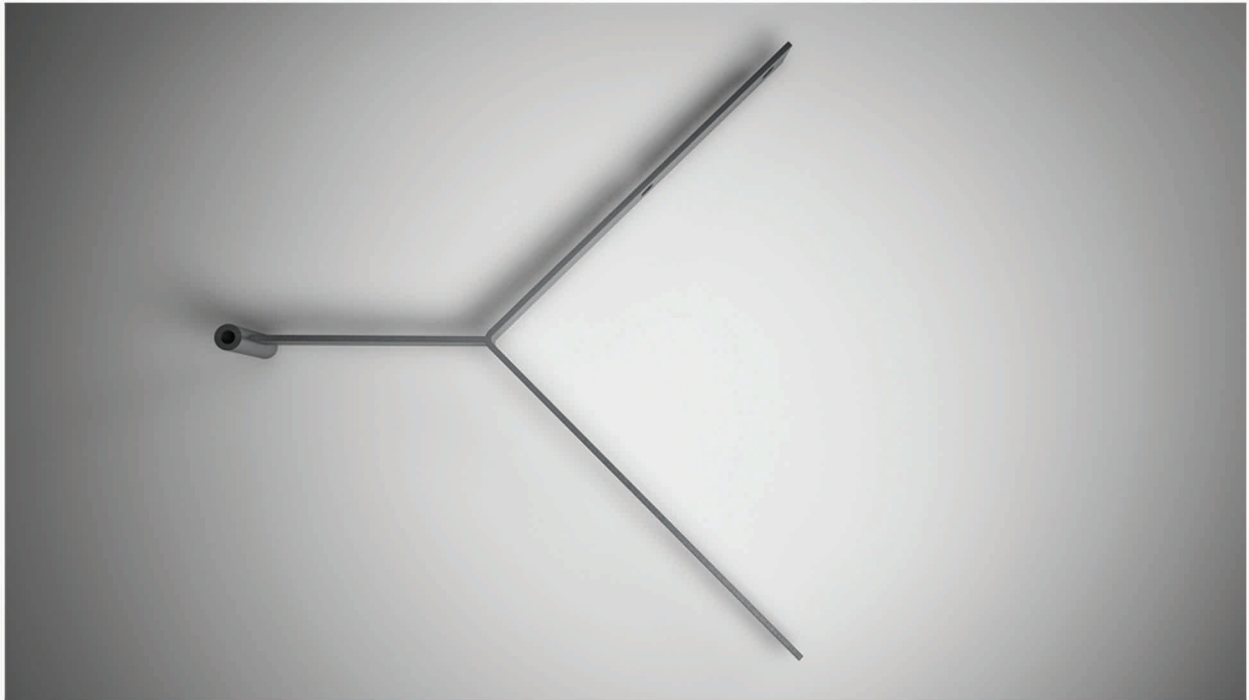
BRACKET
FOR ANTI CLIMBING GUARD-STEEL POLES



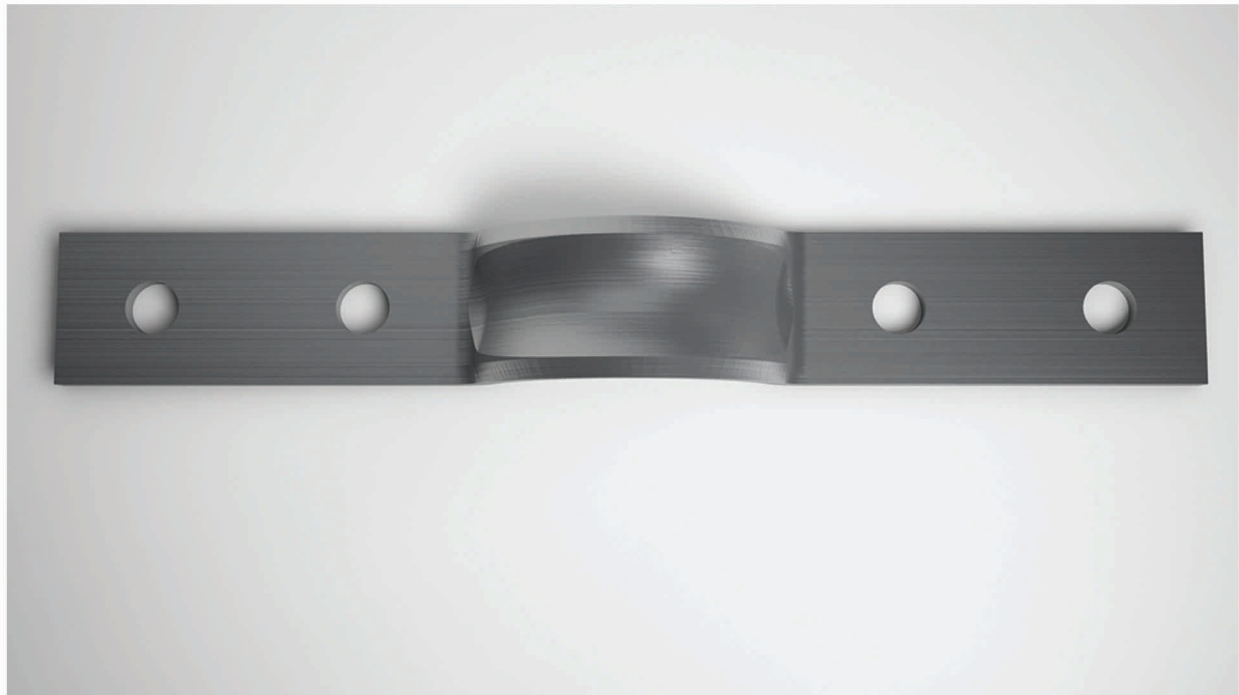
BRACKET FOR EARTH WIRE P.O.CROSSINGS



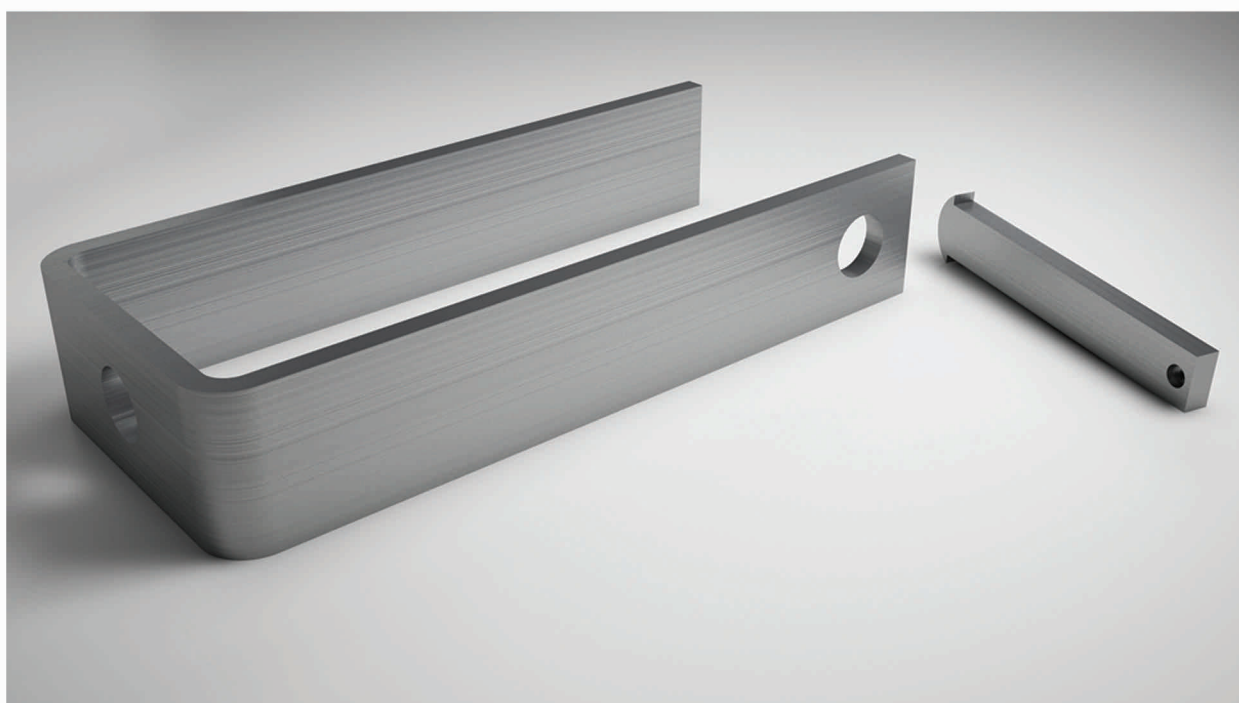
BRACKET
FOR LV HOUSE SERVICE (CORNER)



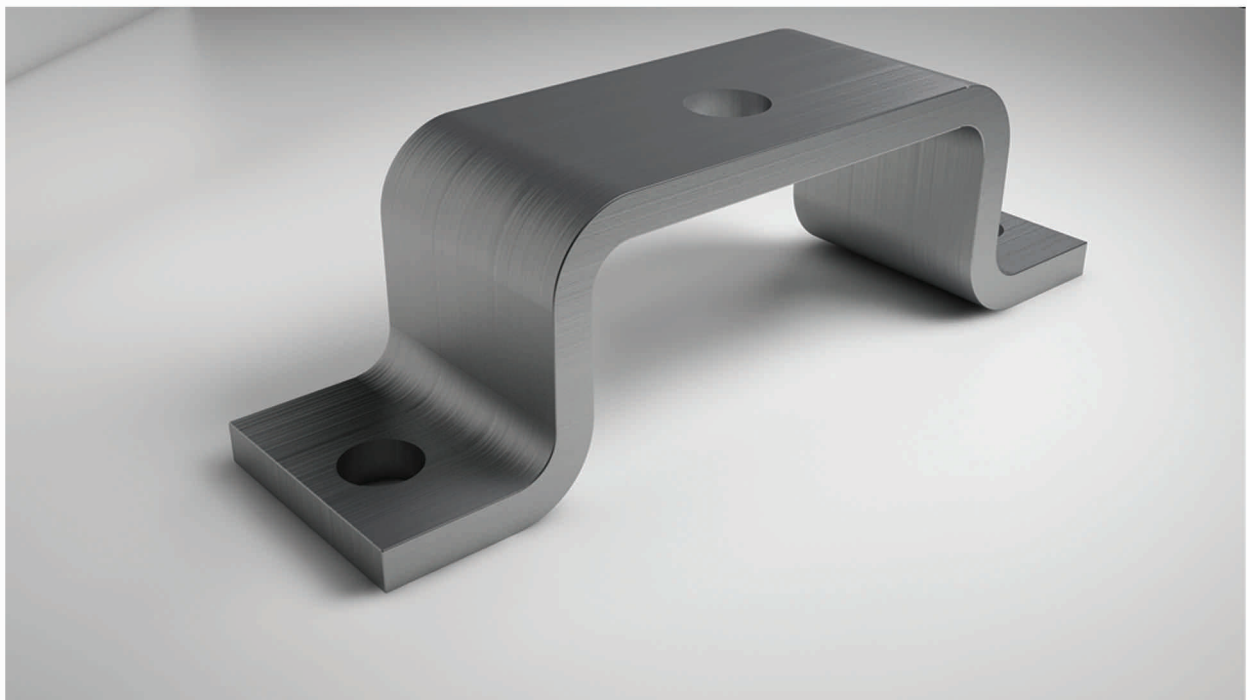
BRACKET
FOR LV HOUSE SERVICE (FOR CONCENTRIC CABLE ONLY)



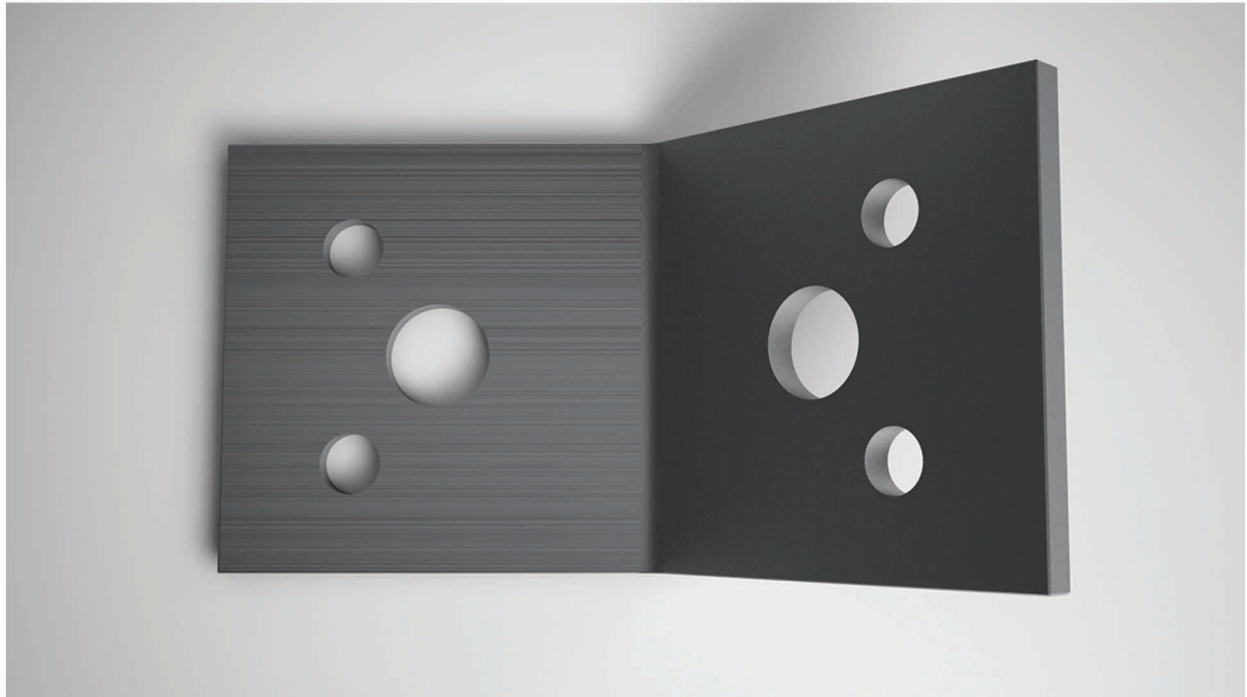
BRACKET & PIN
FOR LV INSULATOR (D IRON & PIN)



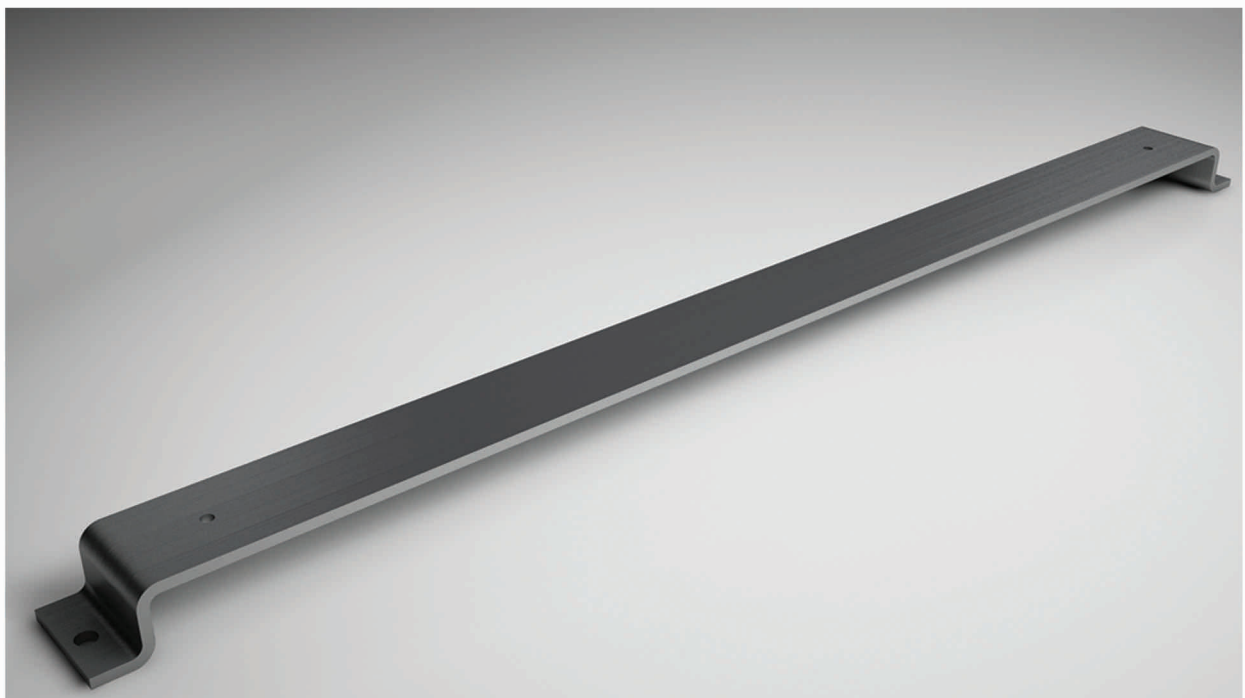
BRACKET
FOR 33 kV/11 kV INSULATOR



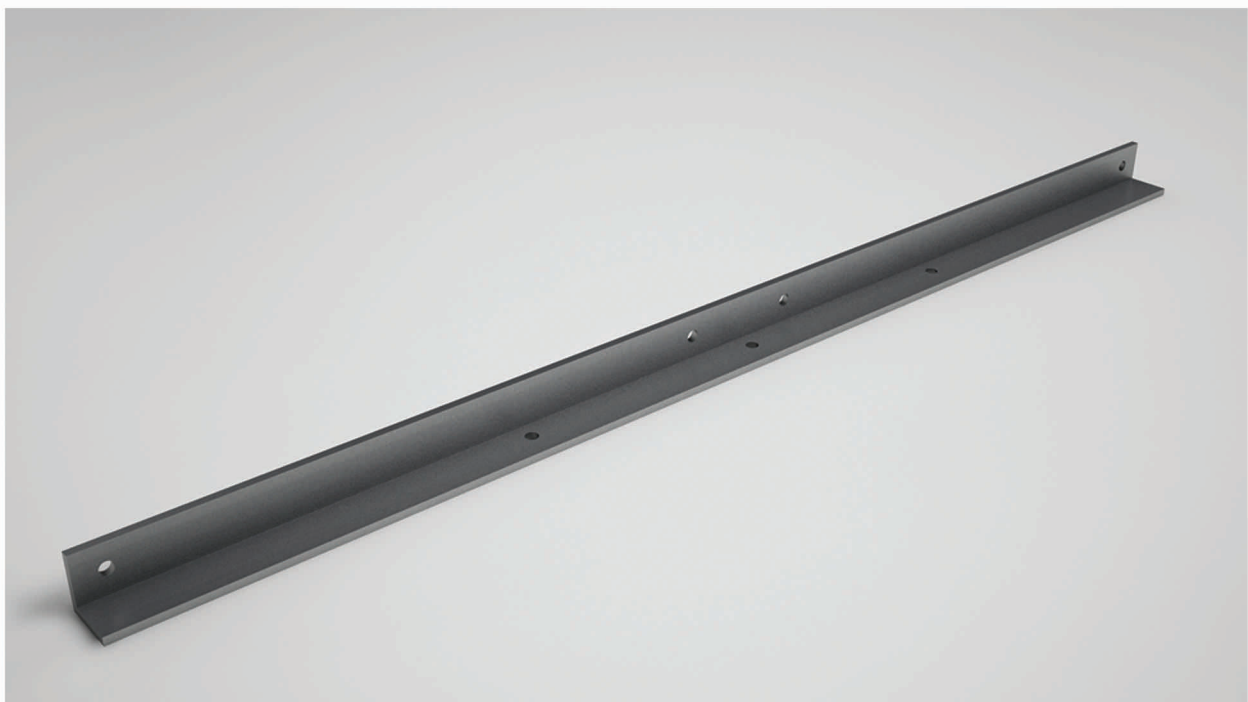
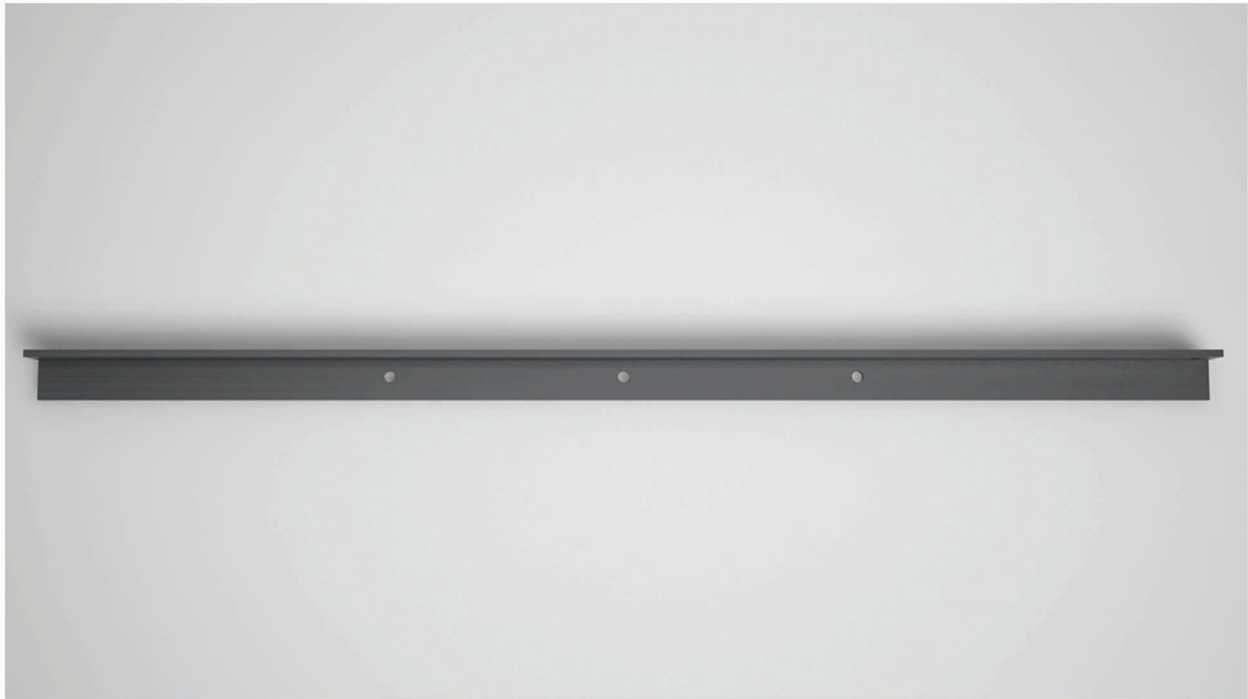
BRACKET FOR SUPPORTING



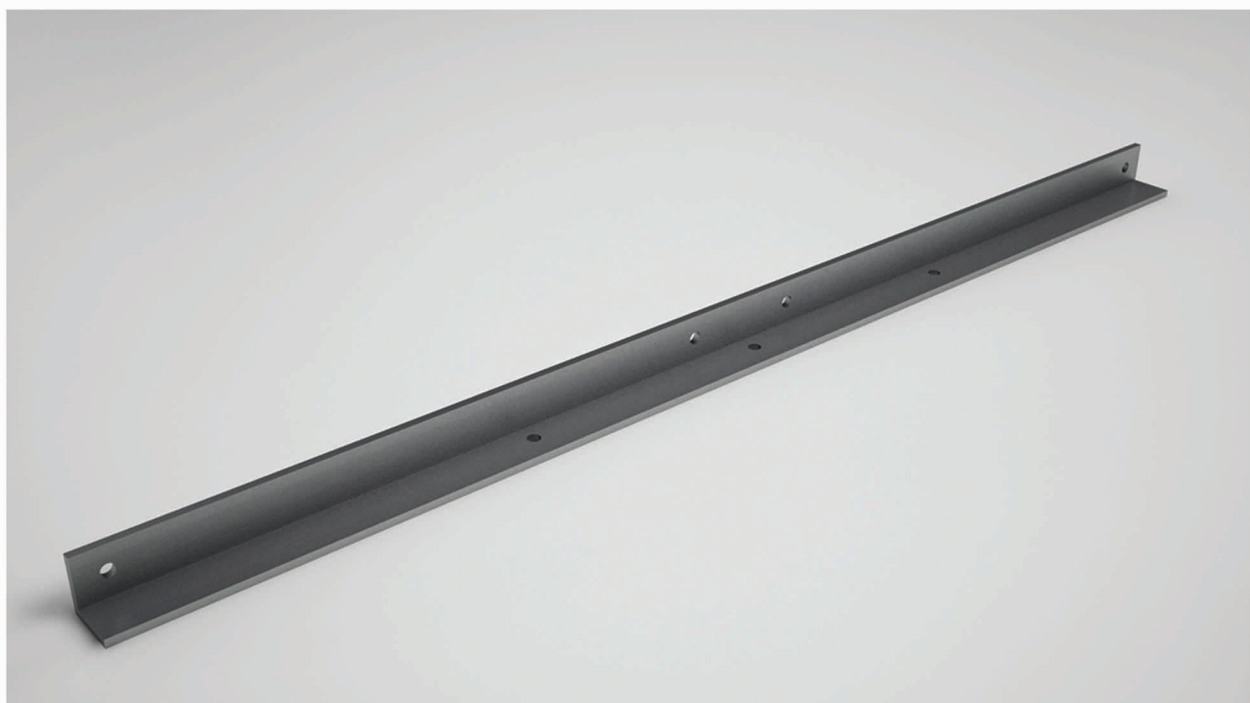
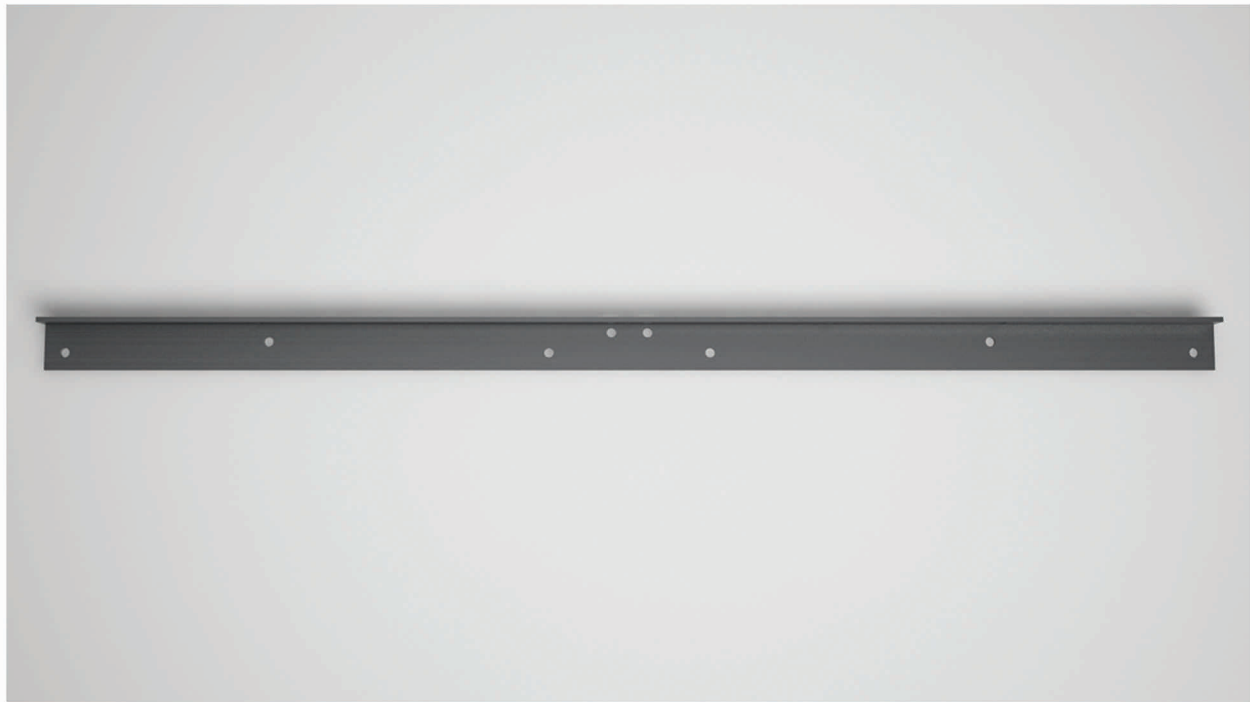
BRACKET FOR SURGE DIVERTER



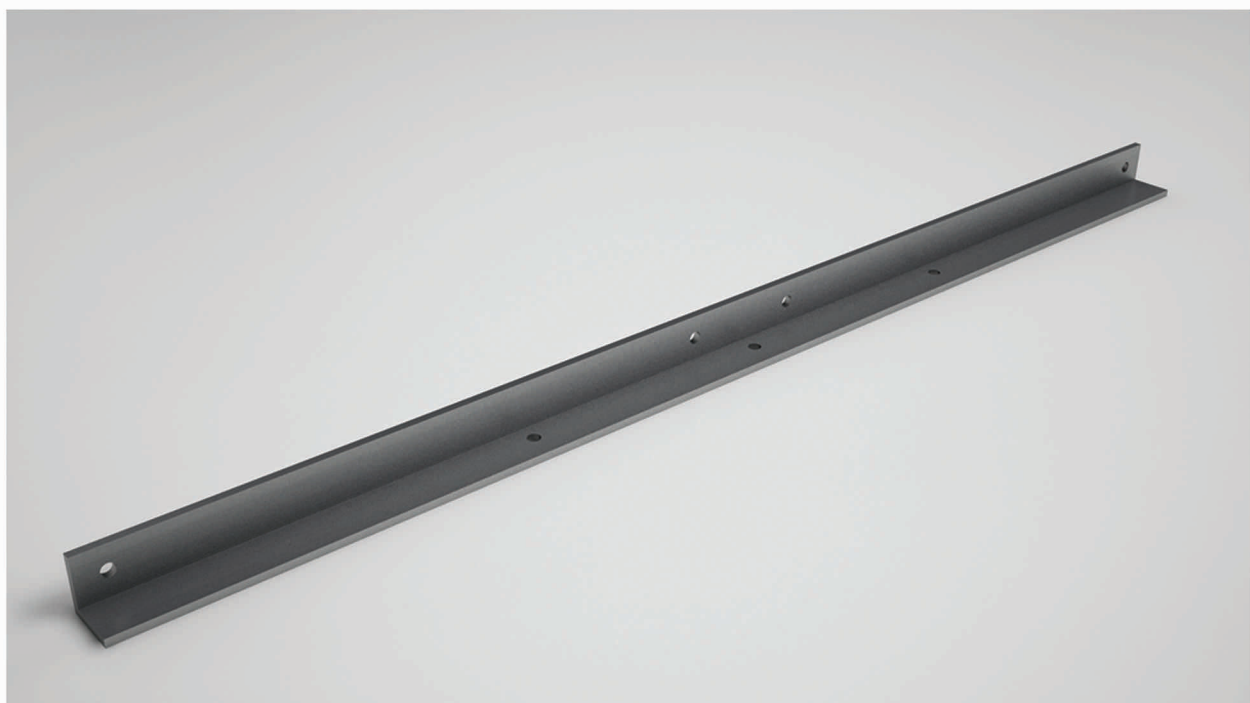
CROSSARM FOR 33 kV/11 kV INTERMEDIATE AND PIN ANGLE



CROSSARM
FOR 33 kV/11 kV SECTION ANGLE UP TO 60° DEVIATION



CROSSARM FOR 33 kV/11 kV TERMINAL



PLATFORM
FOR SUPPORTING SURGE DIVERTERS PILOT
INSULATORS OR D.O.E FUSES-33 kV

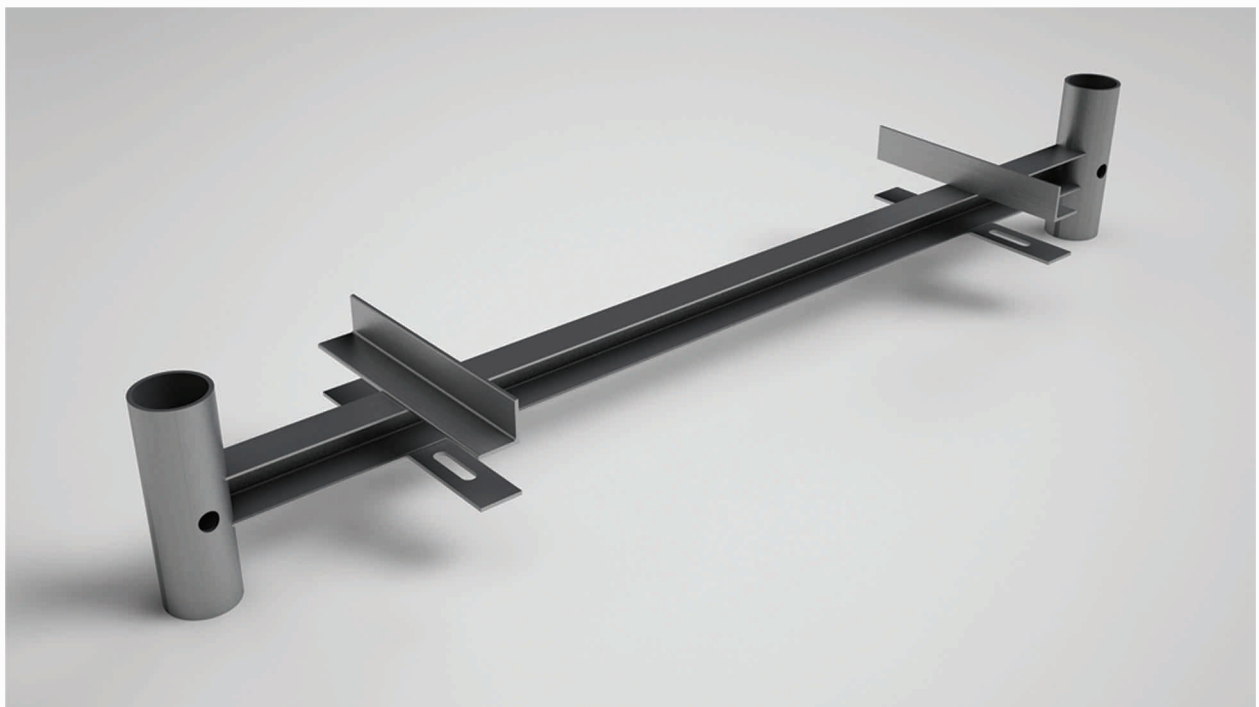
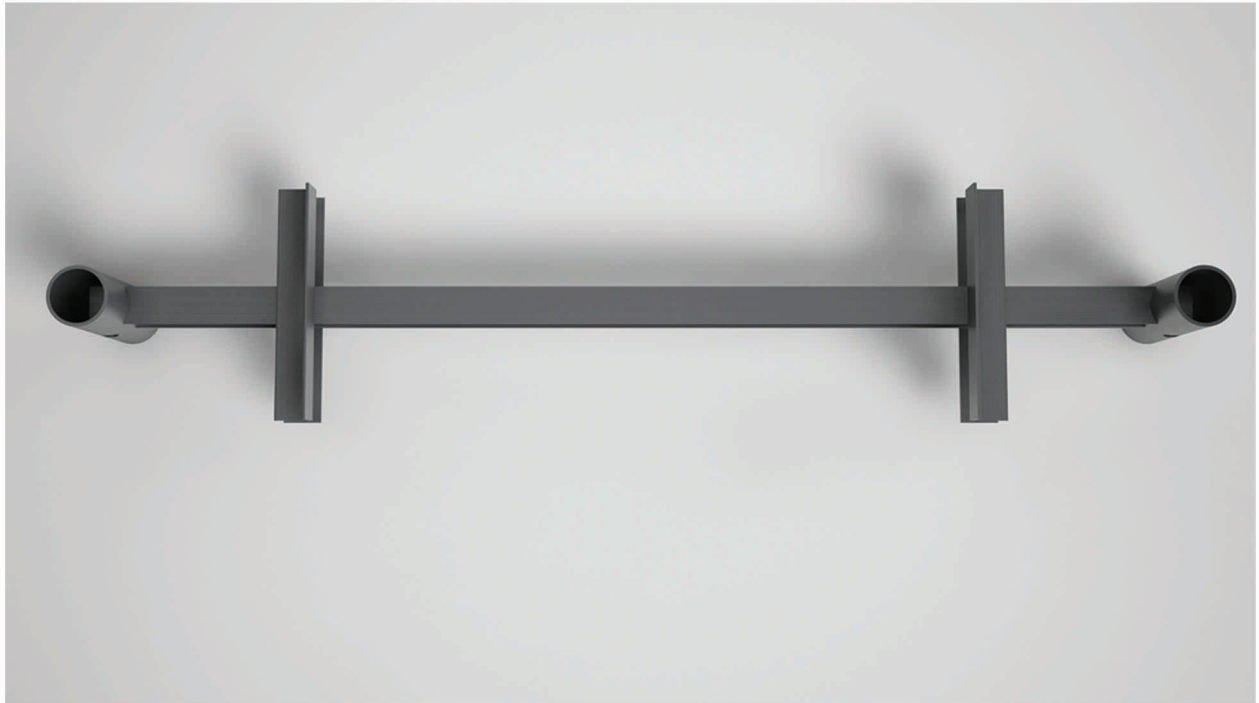


PLATFORM

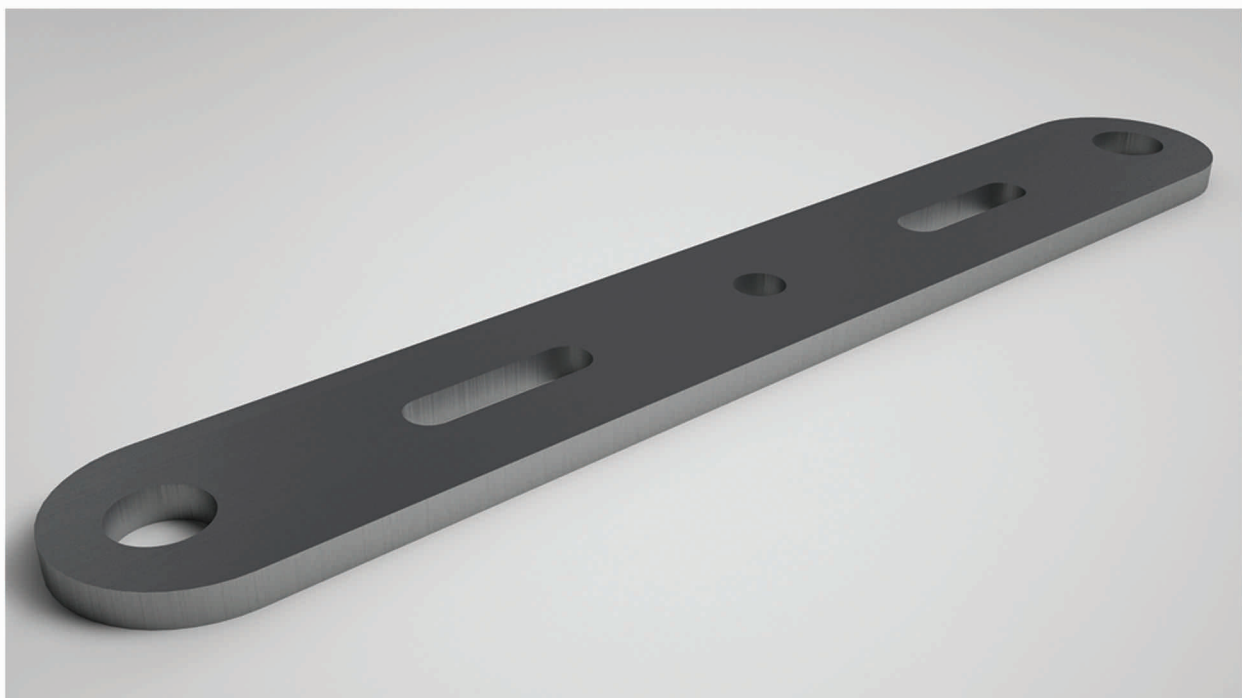
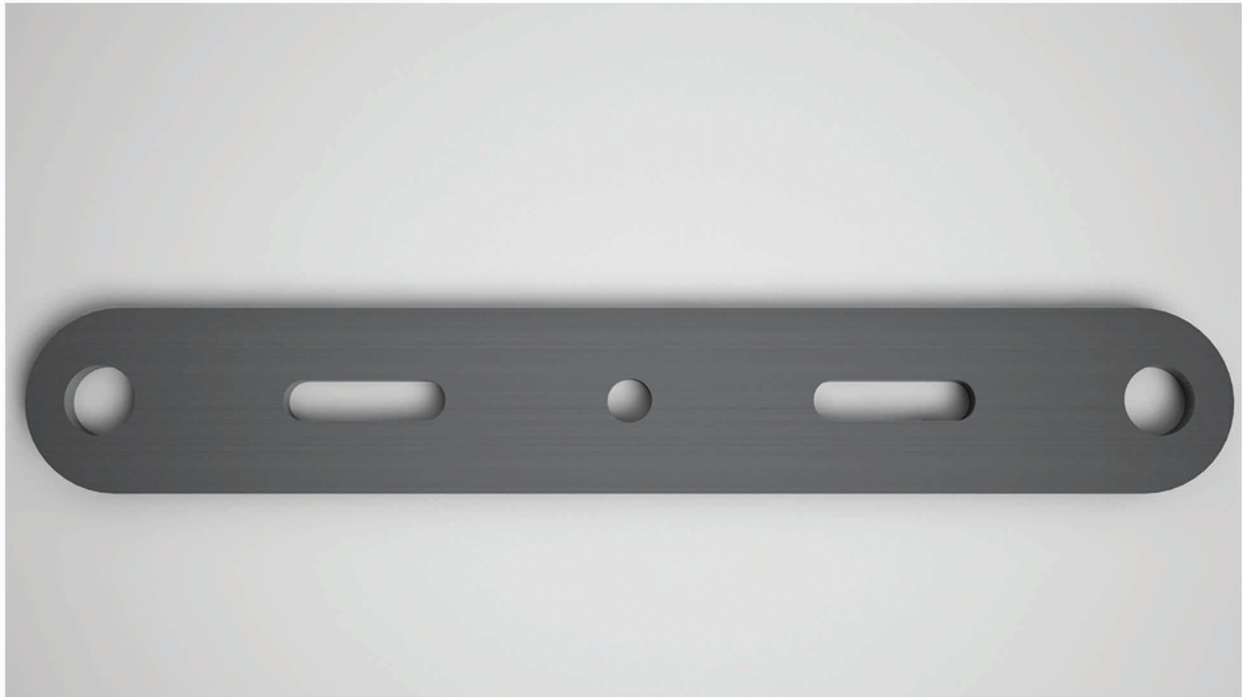
FOR SUPPORTING SURGE DIVERTERS PILOT
INSULATORS OR D.O.E FUSES-11 kV



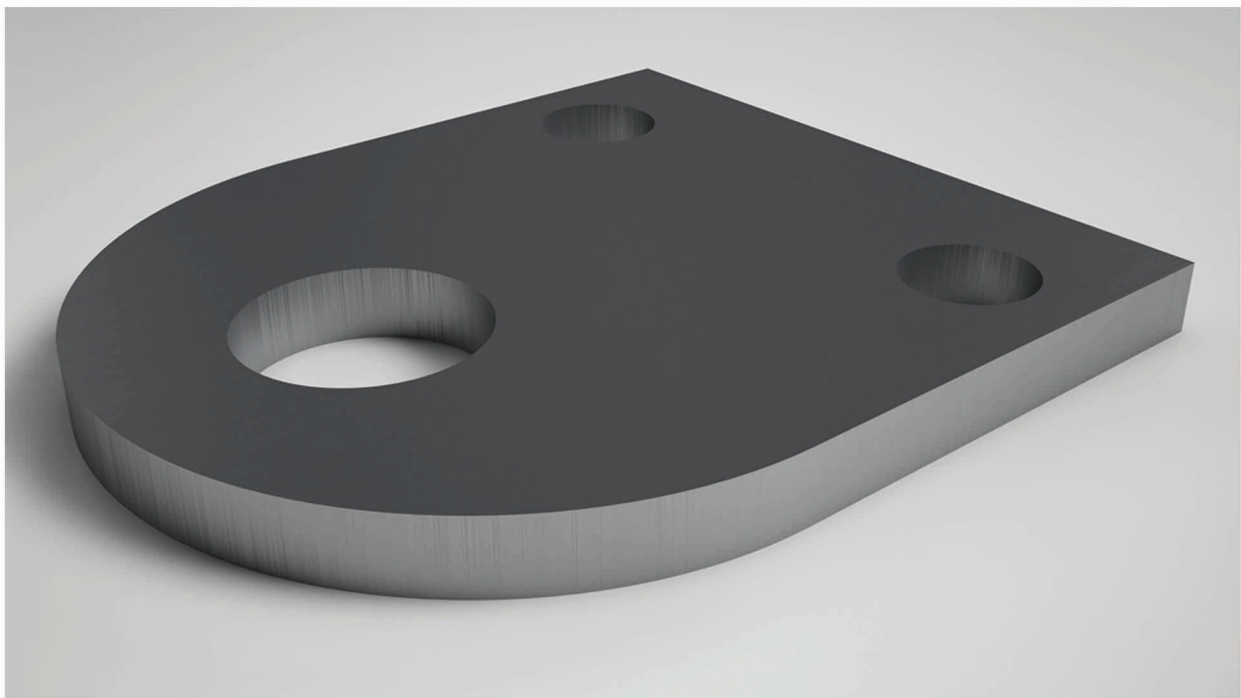
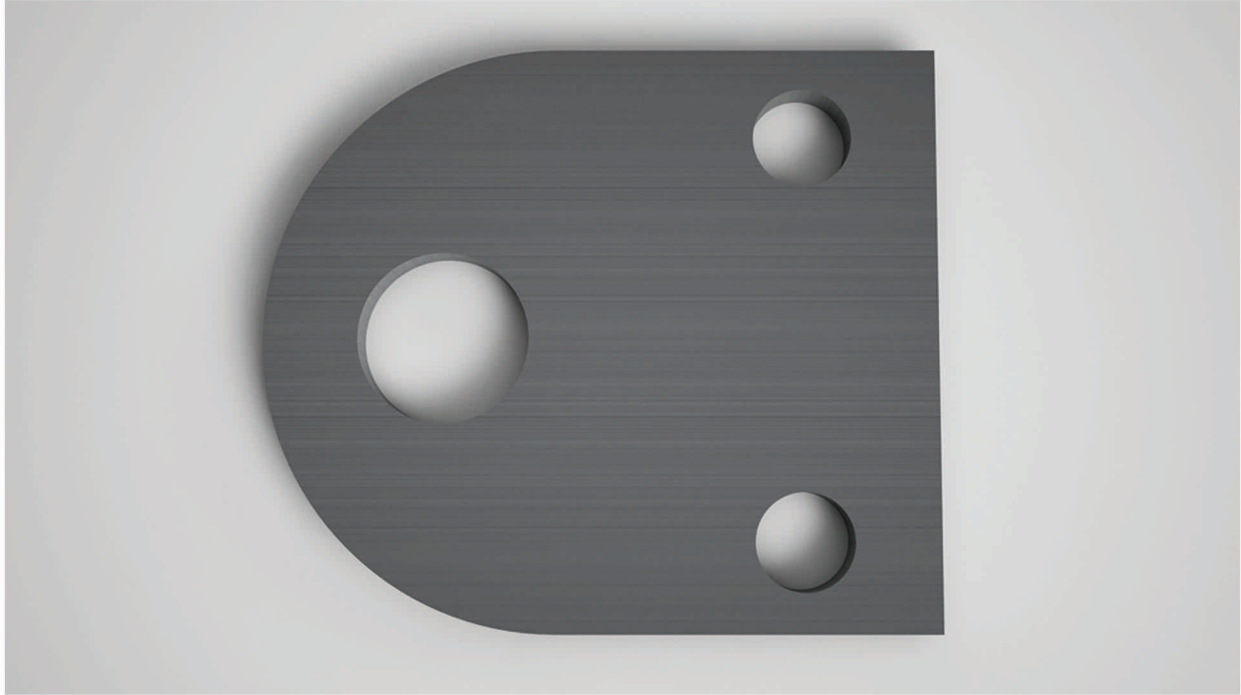
PLATFORM FOR TRANSFORMER-H-POLE



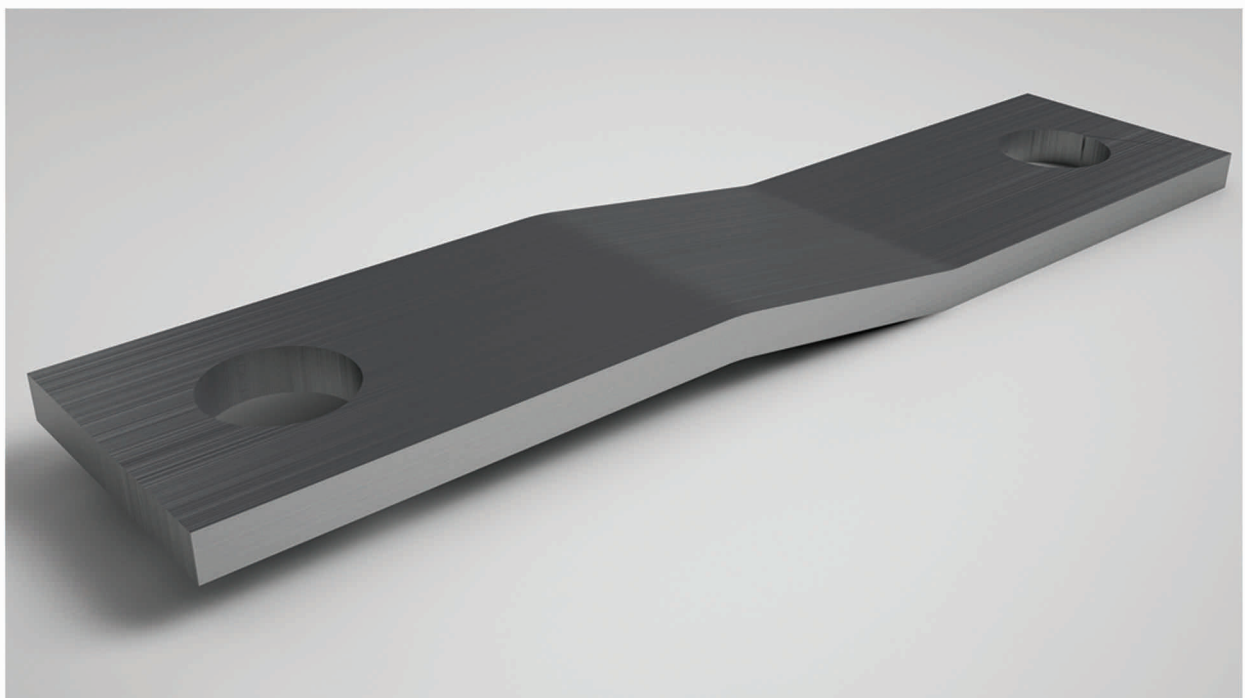
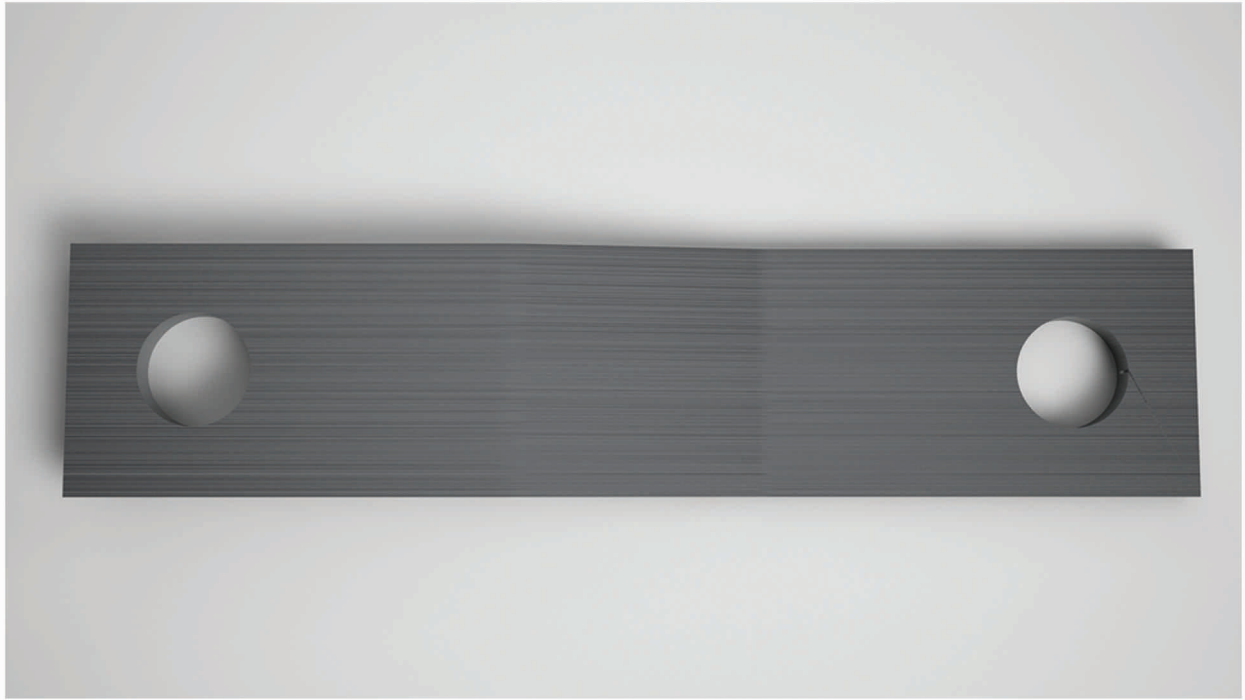
STRAP
FOR 33 kV/11 kV SECTION



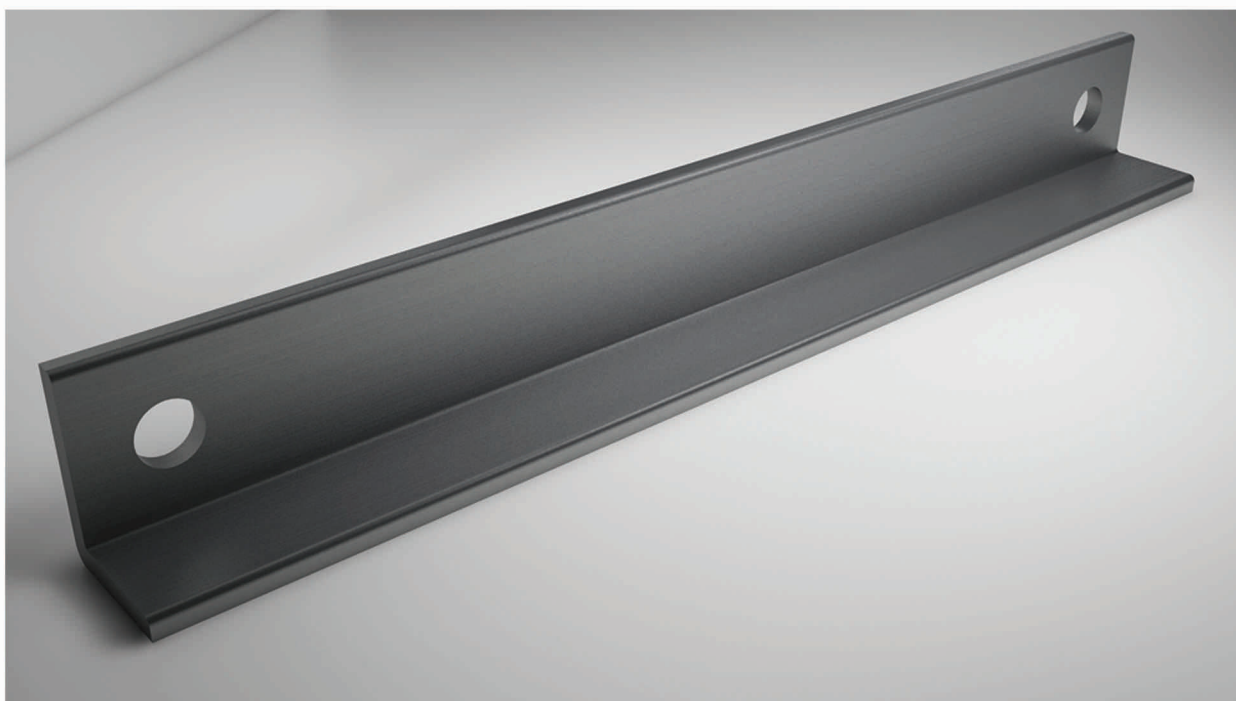
STRAP
FOR 33 kV/11 kV TERMINAL



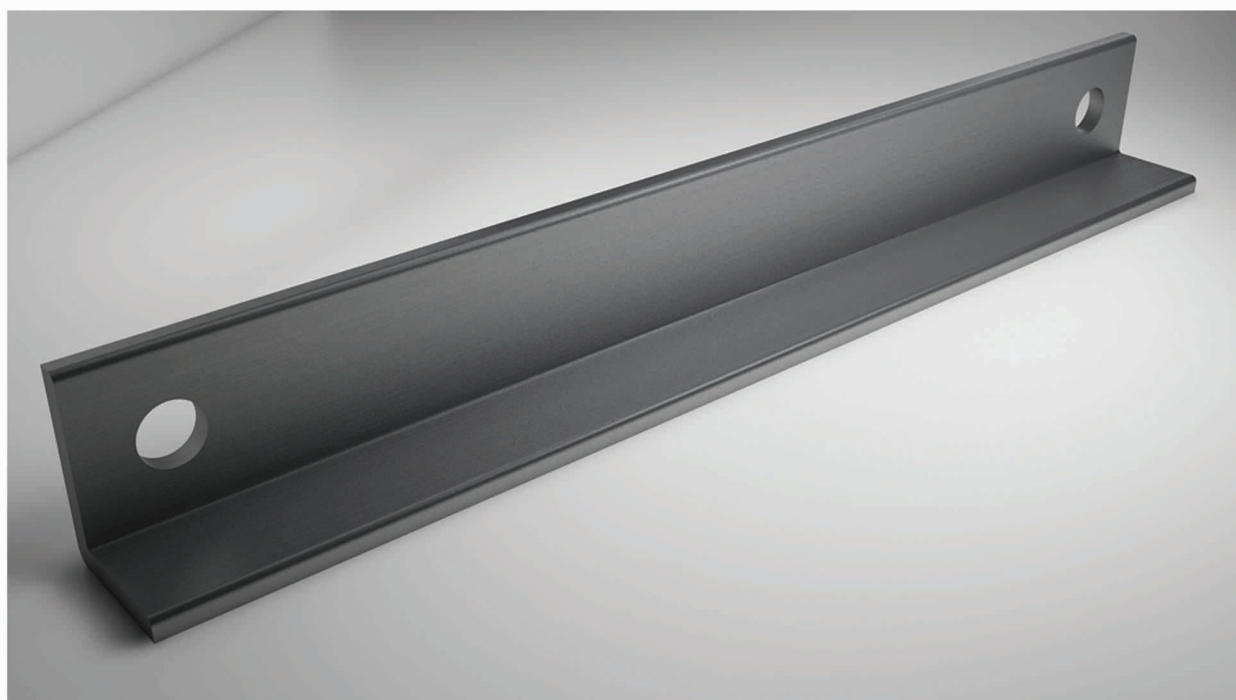
STRAP FOR LV EXTENSION



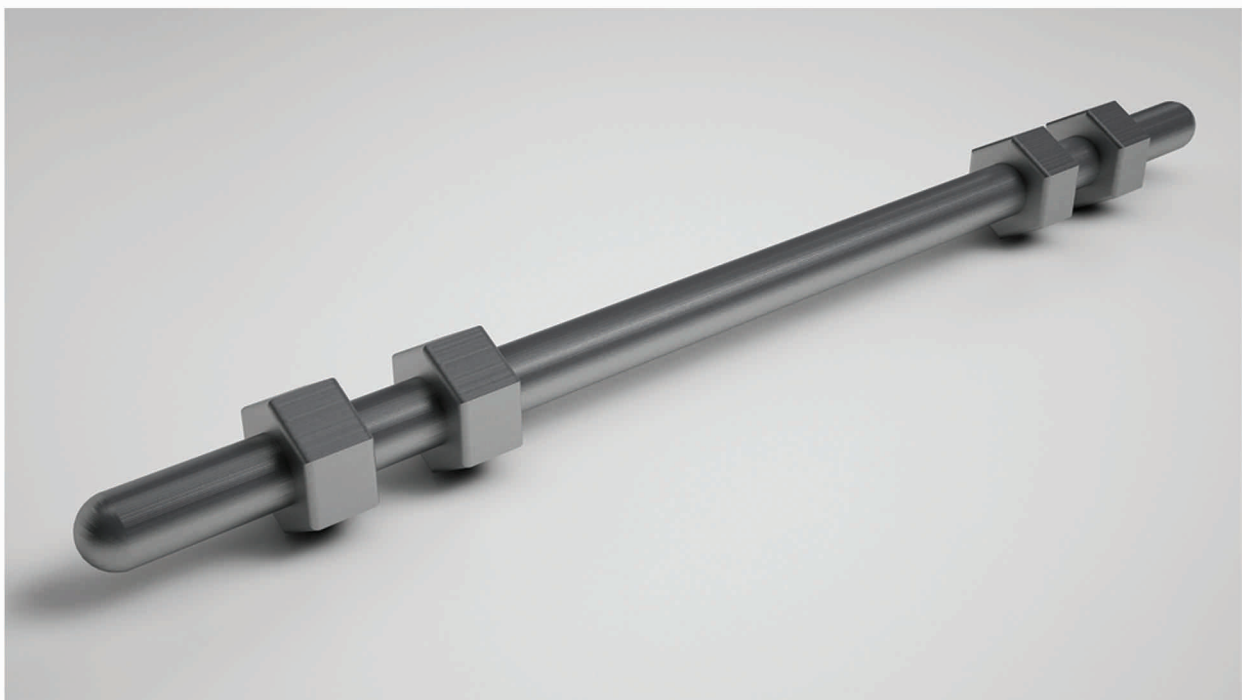
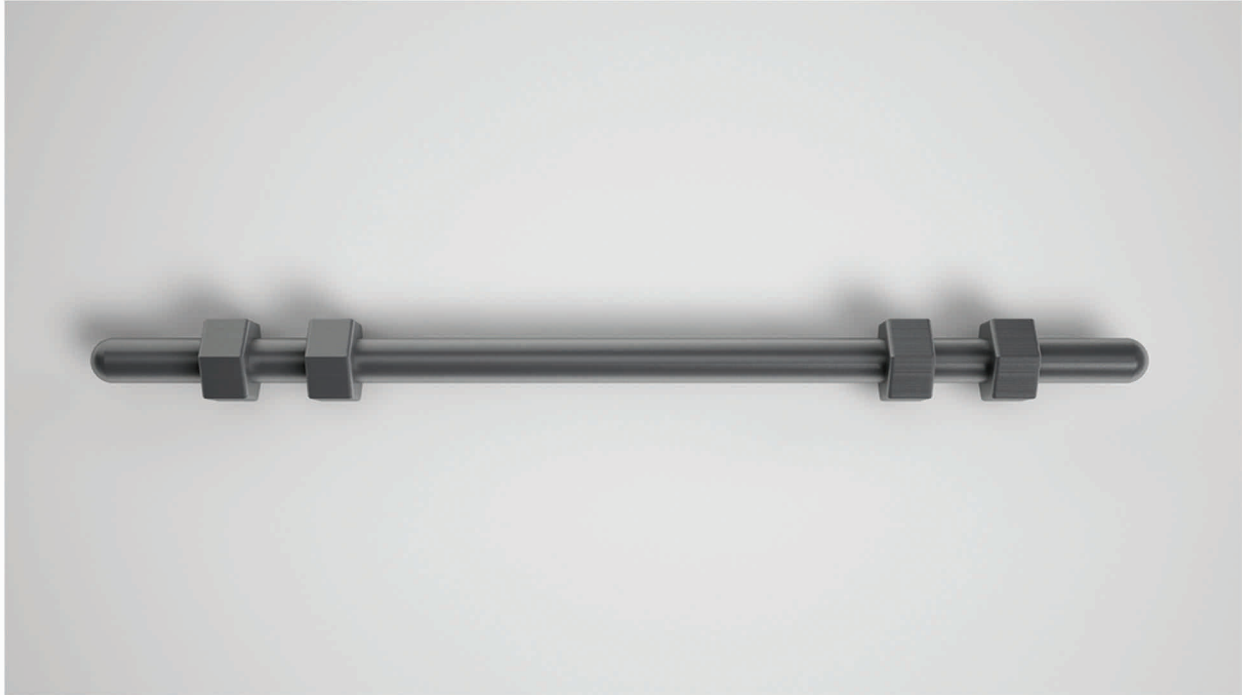
BRACE
FOR 33 kV/11 kV CROSSARM



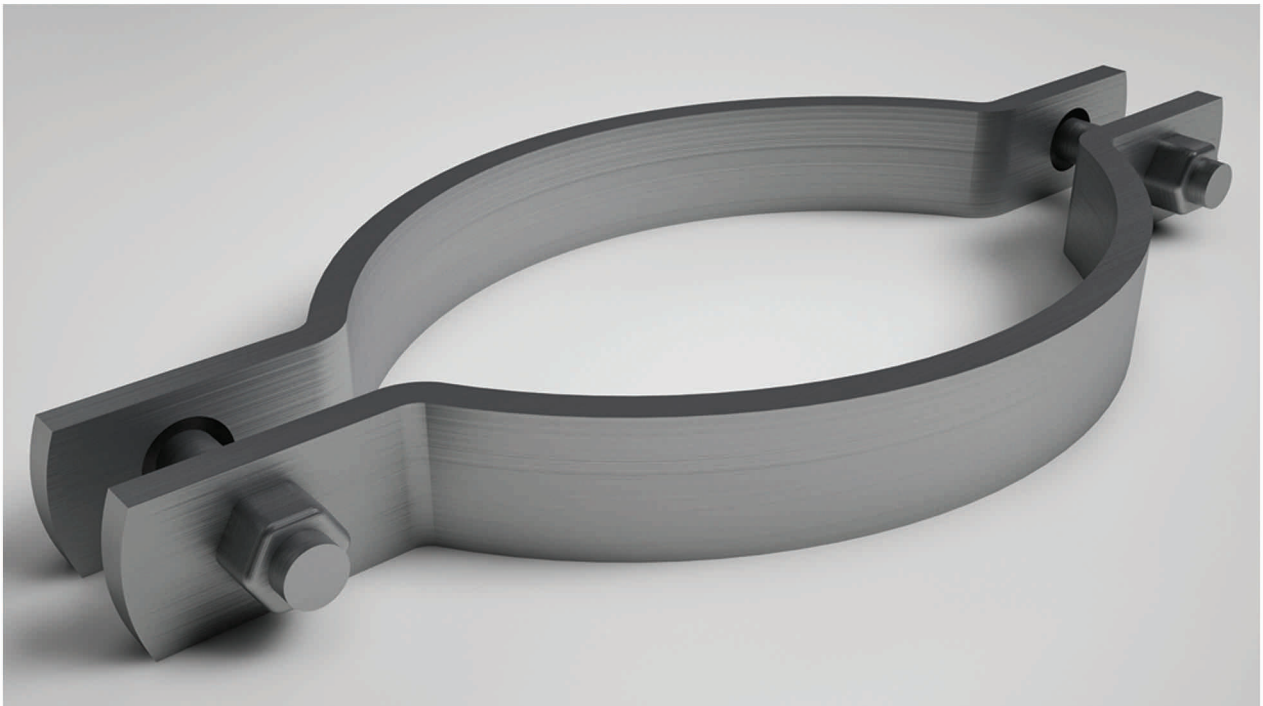
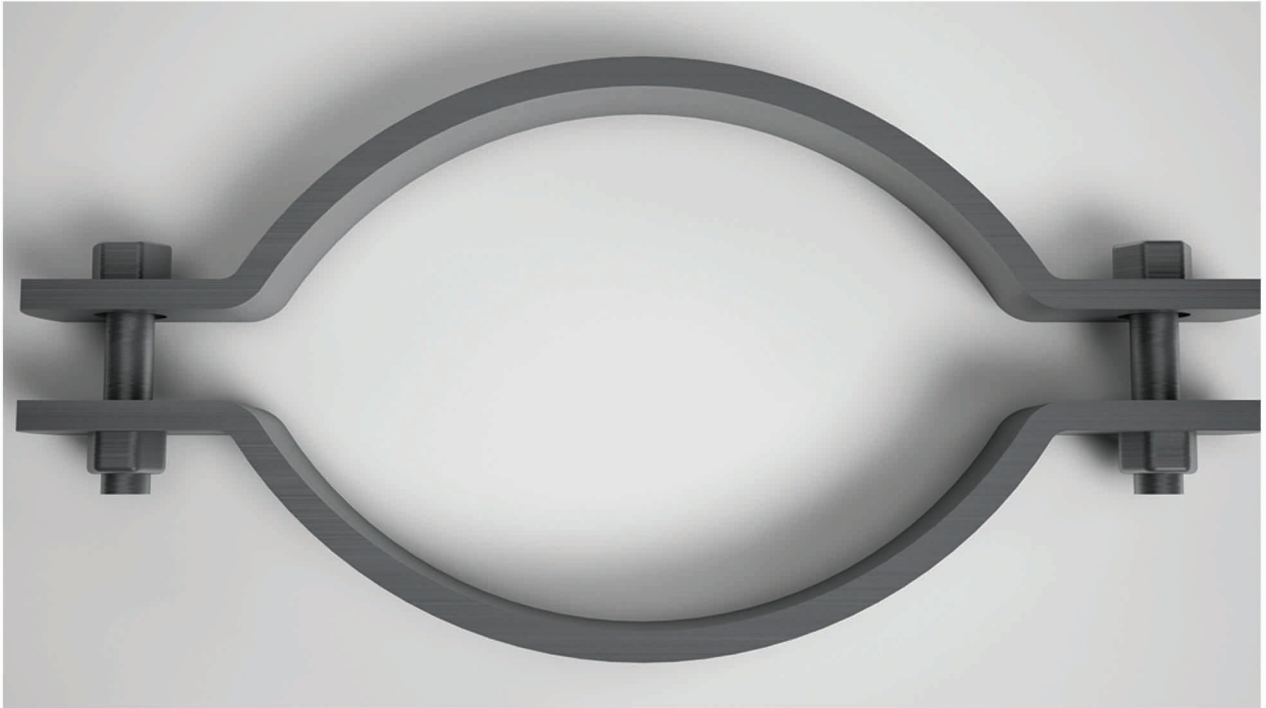
BRACE
FOR 33 kV/11 kV CROSSARM



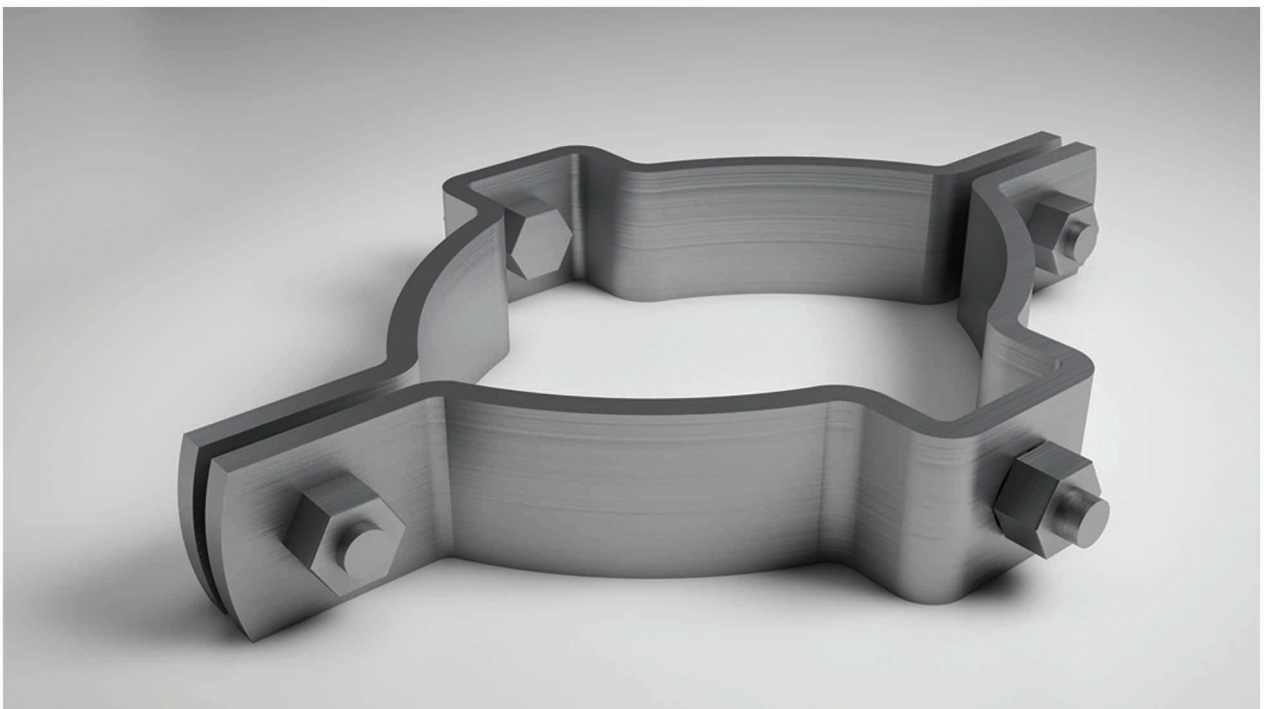
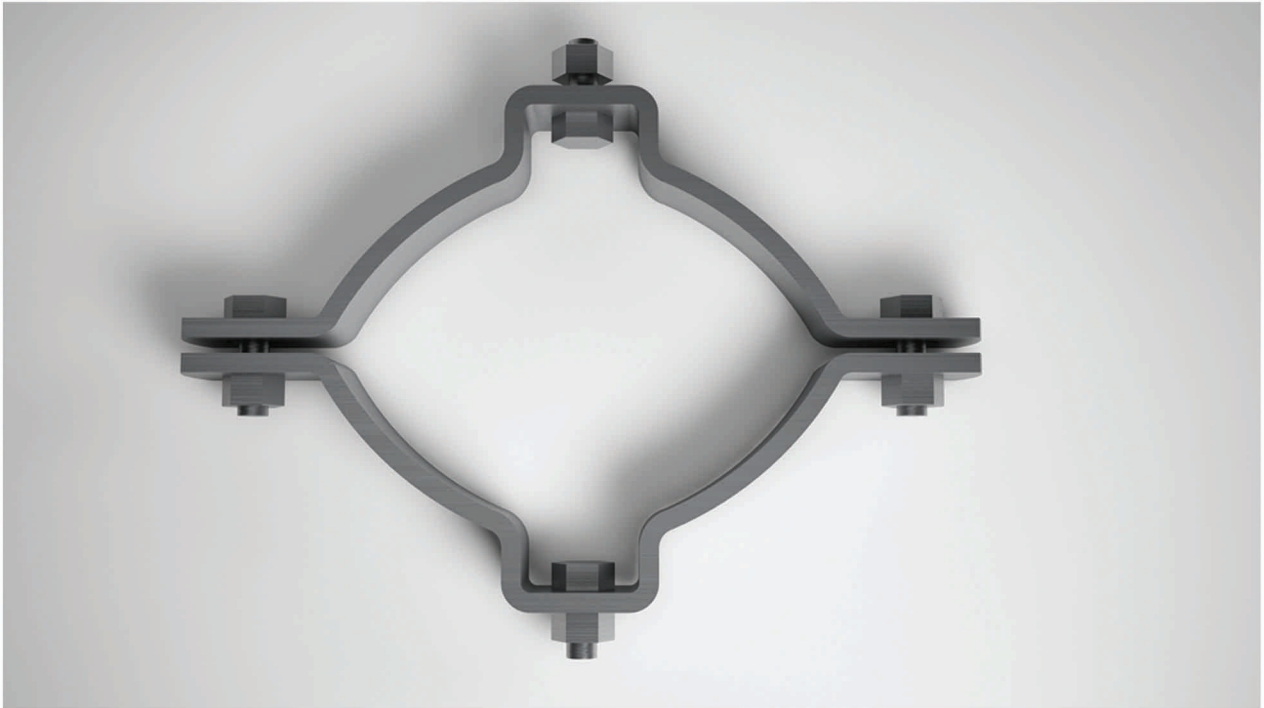
TIE-RODS FOR 33 kV/11 kV OVERHEAD LINES



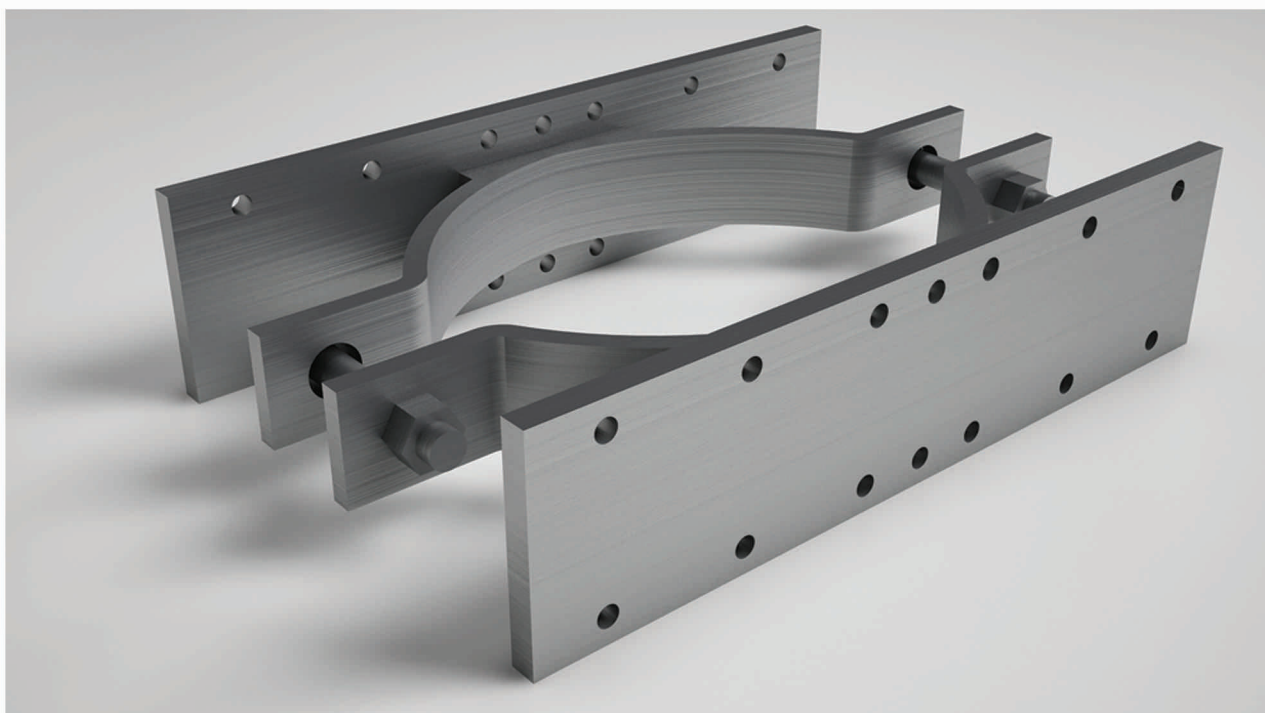
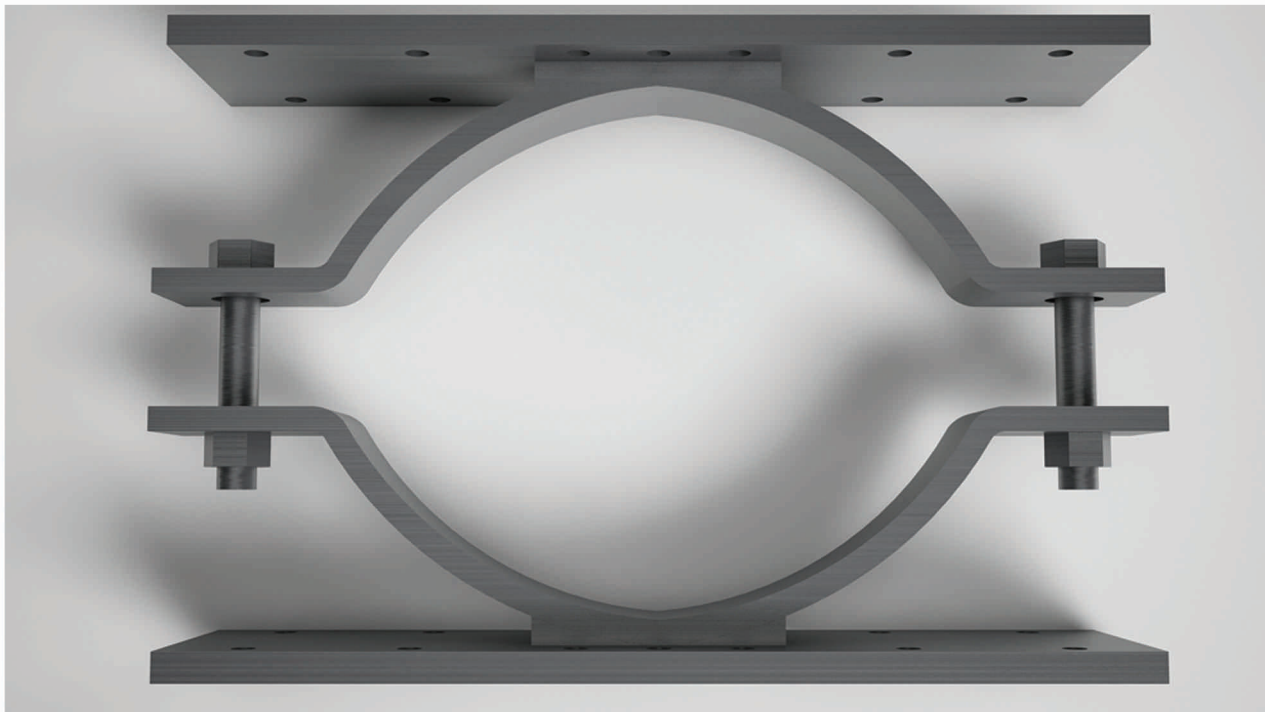
CLAMP FOR STAY WIRE TERMINATION



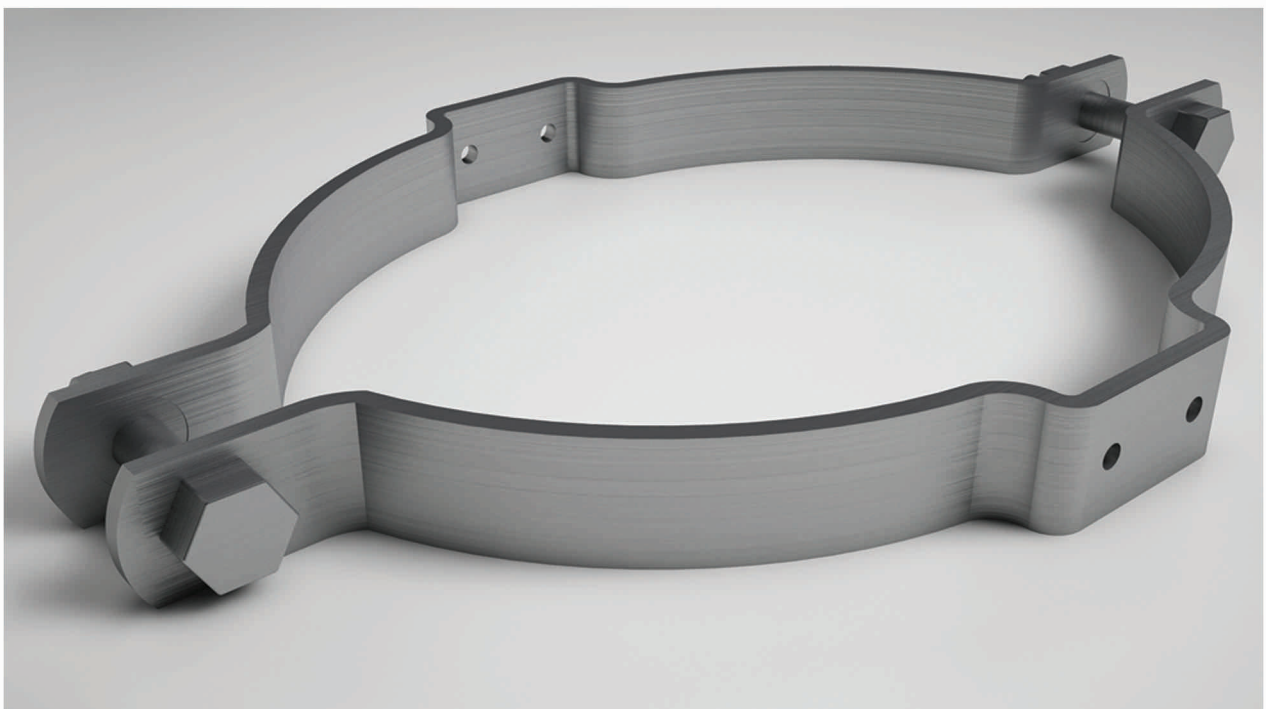
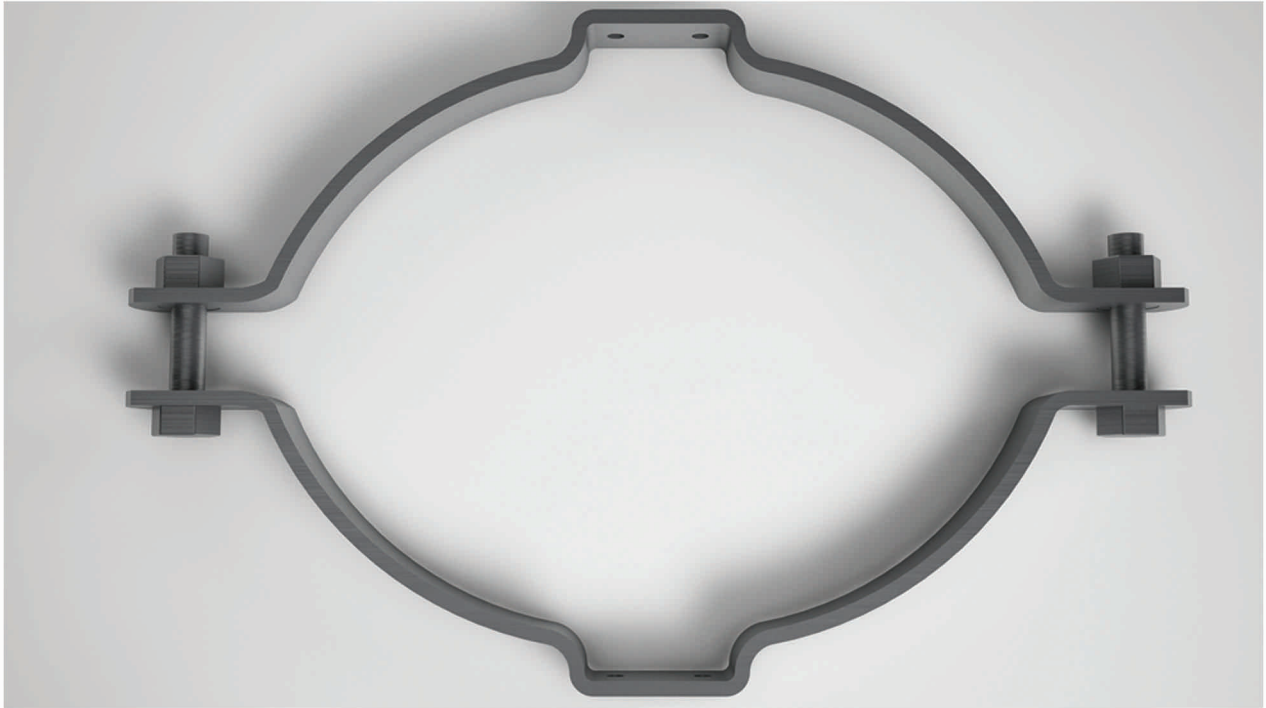
CLAMP FOR ADAPTOR



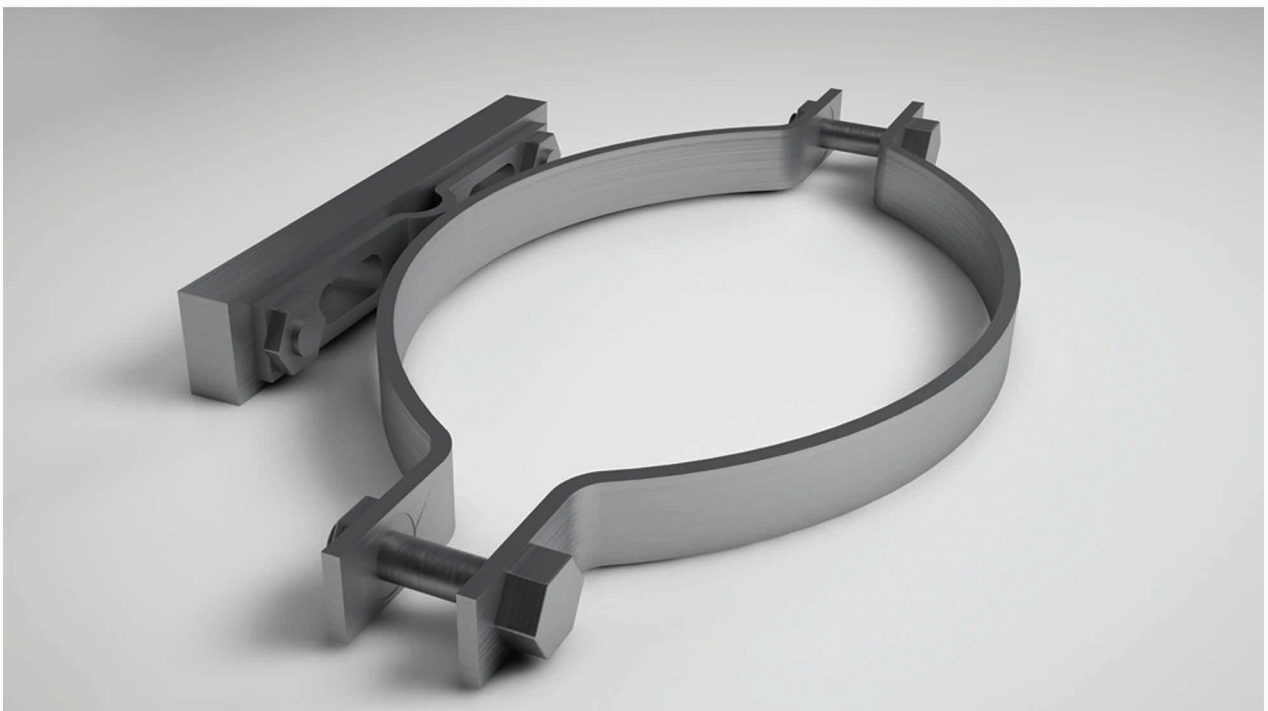
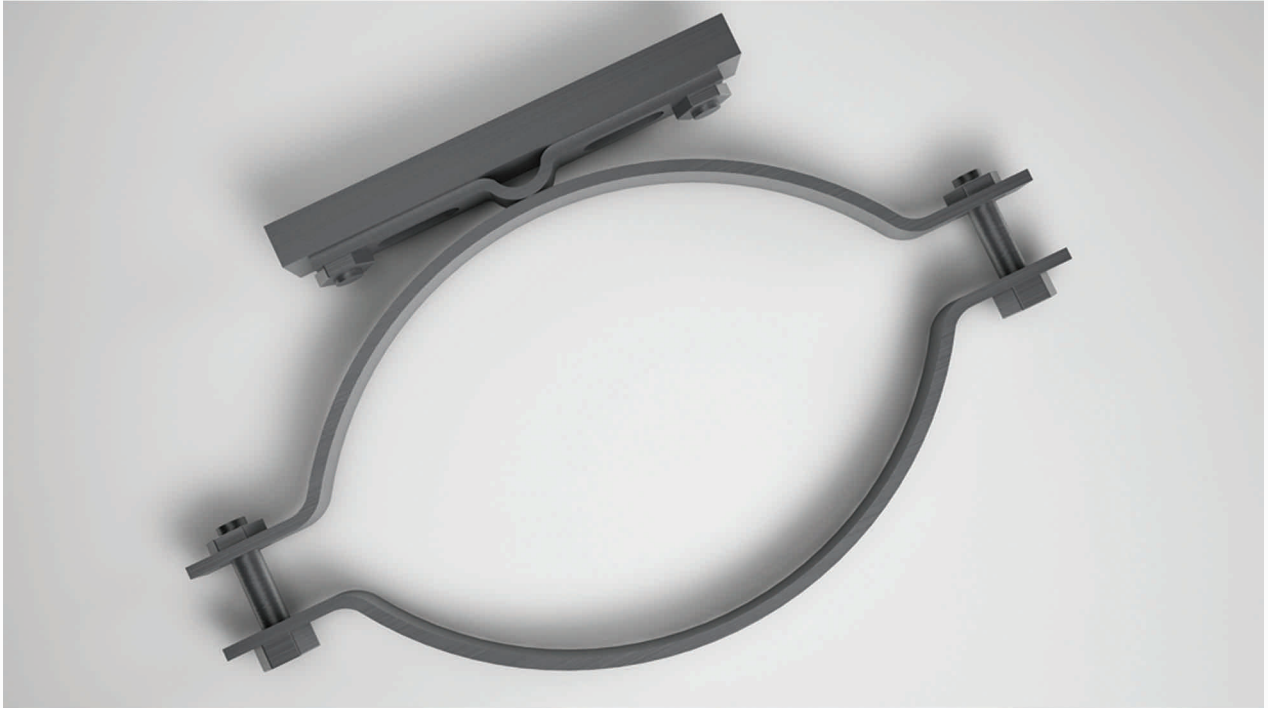
CLAMP
FOR PHASE DISC, NAME LABEL & POLE NO.



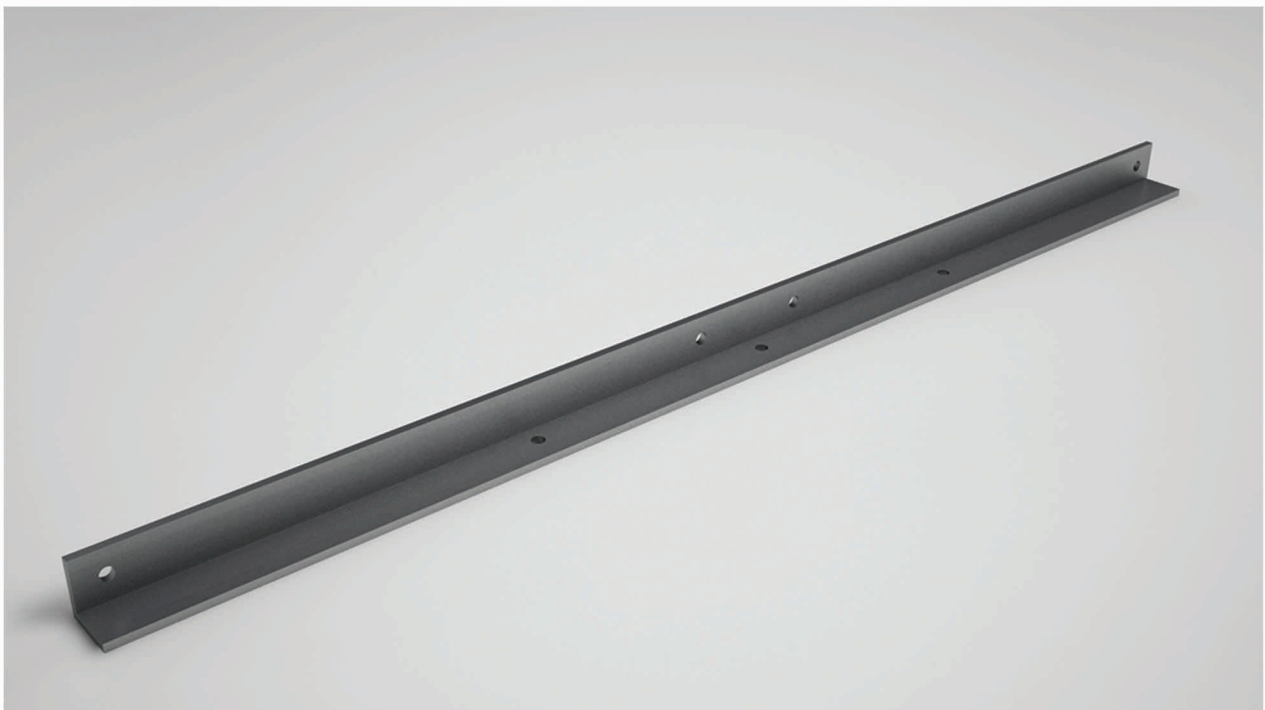
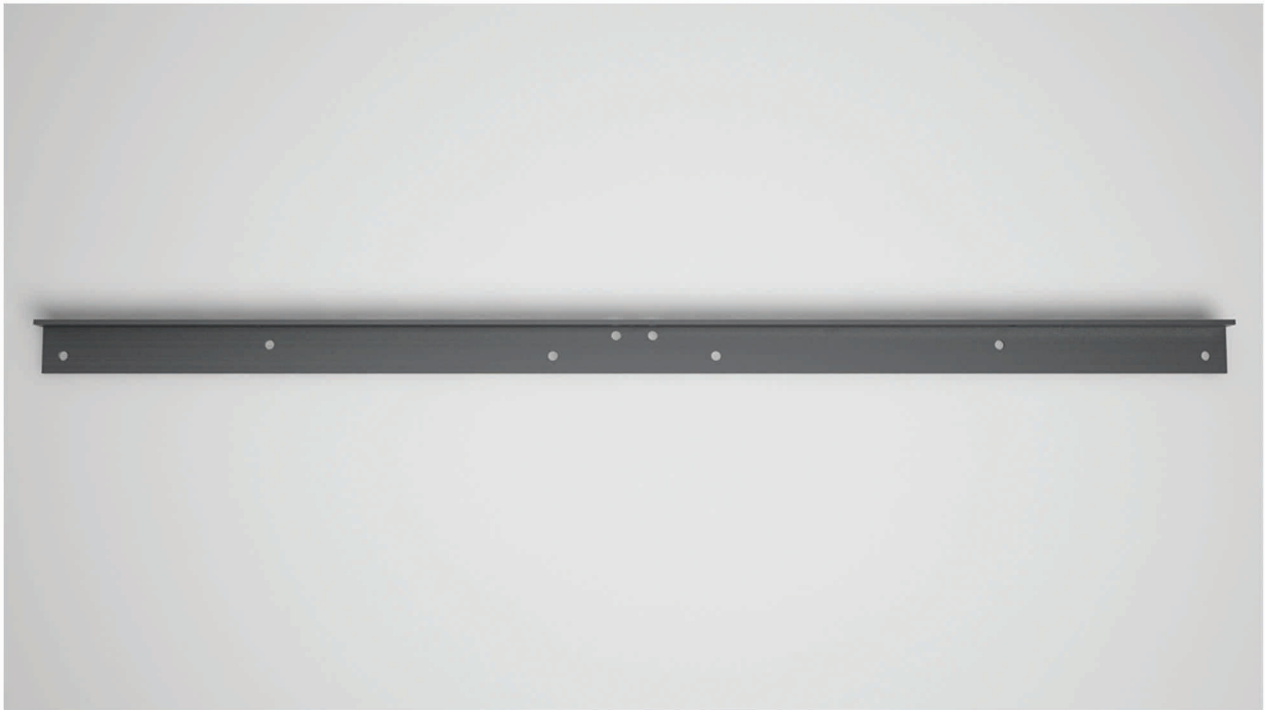
CLAMP FOR DANGER NOTICE PLATE



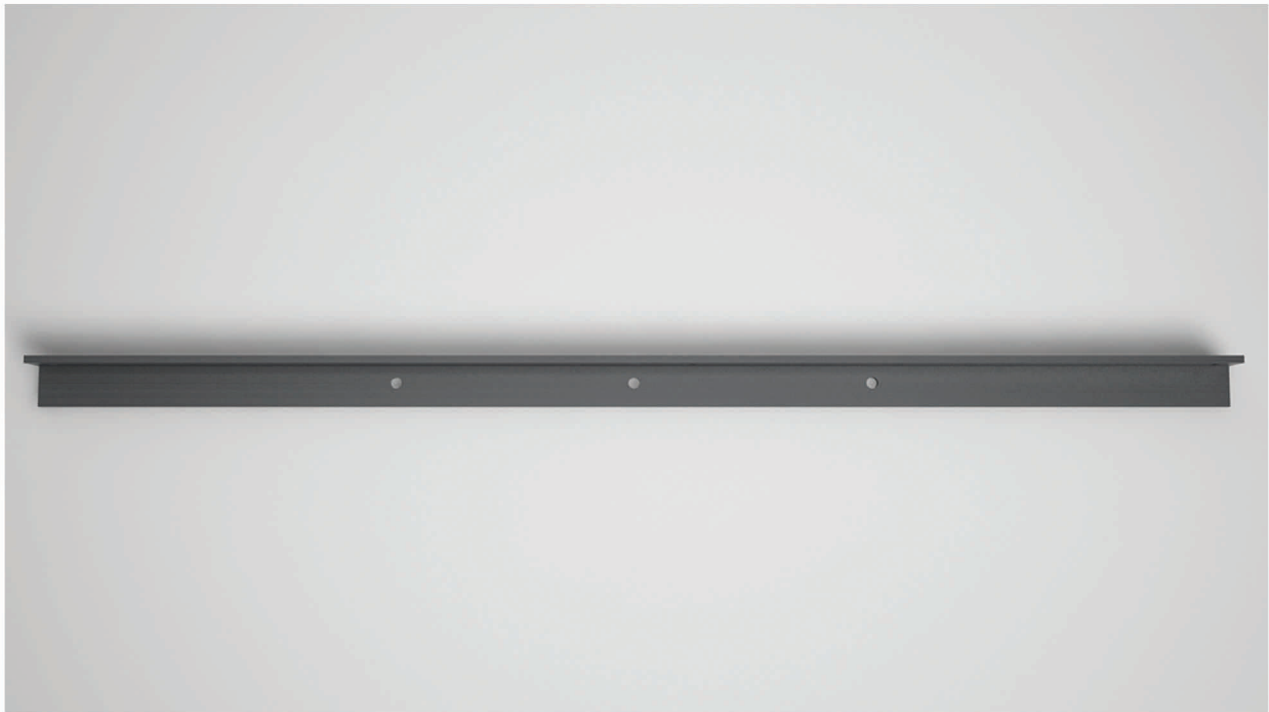
CLAMP FOR CLEAT

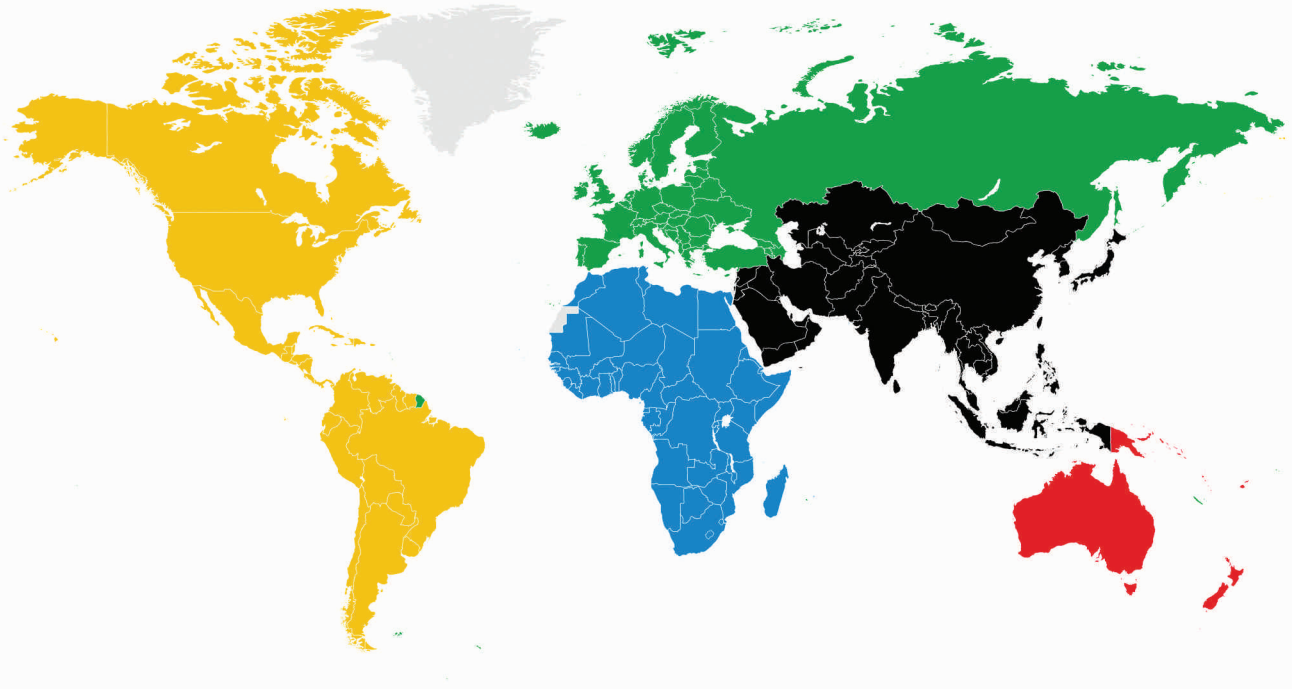


PLATFORM FOR 33 kV SURGE DIVERTERS SUPPORT



PLATFORM FOR 33 kV CABLE SUPPORT





1st Floor, St. George Shopping Complex
Aluva Road, Angamali - 683 572
sales@everfreshexportz.com; admin@everfreshexportz.com
Mob : +91 7736006377; +91 9400603136
Land Line: 0484 2454466